

GENERAL CATALOGUE



dura-stone[®]



Durastone, Duratiles markasının ürün grubudur .
Durastone is the product line of the Duratiles brand



İçindekiler Contents

31	Alfa	49	Enstone	65	Materia	61	Renzo
31	Amata	51	Era	63	Maya	41	Rivestimento
33	Arena	53	Etna	67	Mischen	95	Rjeka
35	Atlanta	97	Extreme	81	Mystique	83	Sahra
37	Automium	55	Flagstone	93	Naturalia	99	Side Walk
33	Baum	93	Forest	69	Nexus	91	Silver Traverten
35	Belenco	57	Galeria	65	Norr	89	Slate
39	Belgian Blue	53	Graben	71	Nuvola	87	Tappeto
39	Beton	49	Granit	73	Ohio	89	Terracotto
43	Blue Stone	59	Katunga	71	Ontario	73	Terrazo
37	Botticino	51	Labranda	75	Oregon	69	Toscana
41	Calmente	55	Leo	75	Orfe	91	Traverten
41	Carine	59	Lucca	79	Palmwood	77	Valente
43	Como	57	Lutterust	47	Pasicifo	85	Vermont
45	Cotto	95	Madruzzo	61	Pedra	79	Vivid
45	Deep	61	Mangan	37	Pietra	77	Vulkon
47	Duden	67	Maps	85	Porto		
33	Elegance	63	Massimo	87	Praia		

Seramiğin Gizemli Dünyasına Davetlisiniz...

You Are Invited to the Mysterious World of Ceramics...



DURASTONE ile

Ülkemizde, son yıllarda süratle gelişen ve büyüyen yapı sektöründe, sayıları her geçen gün hızla artan teknolojik binalarda, ciddi bir biçimde alternatif zemin kaplama malzemesi ihtiyacını ön plana çıkarmıştır.

Estetik ve aynı zamanda fonksiyonel bir mekan yaratmanın en önemli şartlarından birisi de yapılan mekana uygun malzemelerin seçilmesidir.

Özellikle, iç ve dış mekanların en çok kullanılan bölümü olan zeminler ortam şartlarının ihtiyaçlarına uygun hale gelmesinde önemli bir faktördür. Günümüzde çalışma ortamlarında gereksinim duyulan teknolojik alt yapı ve diğer zemin kaplama malzemeleri ile bir arada kullanılabilmesi özelliği ile "Durastone" serisi ürünleri ön plana çıkartmıştır.

Yük ve yay trafiğinin yoğun olduğu bütün iç ve dış mekanlarda güvenle kullanılabilen teknik porselen ürünlerdir. Teknik özellikleri nedeniyle özel ve genel mekanlar için ideal bir çözüm kaplama malzemeleridir.

Teras, balkon, çatı güneşlenme alanları, veranda, sahil, plaj, yüzme havuzu, yaya kaldırımları, araba yolları, metro , havalimanları, tren istasyonları, endüstriyel tesisler, parklar yer altı geçitleri, villa bahçeleri, bilgi işlem merkezleri, dağıtım şirketleri, çağrı merkezleri, eğitim binaları vb. güvenle kullanılabilirlerdir...

With DURASTONE

In the rapidly evolving and growing building sector, a serious need for alternative flooring material in the swiftly increasing technological buildings is came into prominence in our country in the last years.

One of the most important rules for creating an aesthetic and functional space at the same time is to choose the suitable material for space.

Especially, being one of the most used spaces of indoor and outdoor space, floors are an important factor for making the suitable setting for the atmospheric conditions. "Durastone" series came into prominence thanks to its technological substrate needed in the working spaces nowadays and the ability to be used with other lining materials.

They are the technical porcelain materials that can be used at every indoor and outdoor spaces which have an intense load and arch traffic. Due to the technical features, lining materials are an ideal solution for private and broad spaces.

They can be safely used in terrace, balcony, roof sunbathing spaces, patio, seaside, beach, swimming pool, sidewalk, car roads, subway, airports, trains stations, industrial facilities, parks, underpasses, villa gardens, information technologies centers, marketing companies, call centers, education buildings, etc.



DURASTONE ÜRÜN ÖZELLİKLERİ

PRODUCT FEATURES OF
DURASTONE



Küf, yosun ve böcek ilaçlarına karşı dirençlidir.
It is resistant to mold, fungus and pesticides.



Darbeler ve aşırı yüklerle karşı dayanıklıdır.
It is resistant to impacts and overloads.



Su emici değildir.
It is not water absorbent.



Sökülebilir, yenilenebilir, yeniden kullanılabilir.
It is detachable, renewable and reusable.



İsteğe özel kaymaz.
It can be custom-made with the non-slip feature.



Uygulaması kolay ve pratiktir.
Its installation is easy and practical.



Ses ve ısı izolasyonuna katkı sağlar.
It contributes to the insulation of sound and heat.



Donmaya ve yanmaya karşı dayanıklıdır. Yanmaya dayalı genleşme ya da donmaya karşı deformasyonlar yaşanmaz.
It is resistant to freezing and burning. It does not expand due to burning or deform due to freezing.

NACL

Tuzlara, asit ve alkalilere karşı dirençlidir.
It is resistant to salts, acids and alkalis.



Güneş ve su gibi dış etkenlerden etkilenmez uzun ömürlüdür.
It is not affected by external factors such as sunlight and water, it has a long product life.



Termal şoklara dayanıklıdır.
It is resistant to thermal shocks.



Renginde ve deseninde solma yaşanmaz, zaman içinde değişime uğramaz.
There is no fading in color and pattern, they do not change over time.



Hijyenik yapıya sahiptir, kolay temizlenir, basınçlı suyla yıkanabilir.
It has a hygienic structure, it is easy to clean and it can be washed with pressure water.





DURASTONE KULLANIM ALANLARI

AREAS OF USAGE FOR DURASTONE

Yüksek teknik yeterliliği sayesinde özel ve halka açık mekânlar için idealdir. Yoğun insan trafiğinin olduğu ya da mukavemetin ön planda olduğu alanlarda güvenle kullanılabilir. Kalın ve dayanıklı olduğu için eğimli yüzeylerde diğer seramikler gibi kolay kırılmaz otel ve kurumsal firmalarda büyük metrekareli işyerlerinde mutfaklarda ağır malzemelerin bulunduğu ve düşme ihtimali olduğu mekânlarda çatlamaya ve kırılmaya karşı dayanıklı yapısıyla pratik ve ekonomik bir seçimidir.

20mm ve 30mm Durastone seramik karoları yürüme yolları ve yaya yolları yapmak için çimen çakıl ve kum alt katmanları kullanılarak kuru olarak döşenebilir. Kalın ve dayanıklı olduğu için eğimli yüzeylerde diğer seramikler gibi kolay kırılmaz otel ve kurumsal firmalarda büyük metrekareli işyerlerinde mutfaklarda ağır malzemelerin bulunduğu ve düşme ihtimali olduğu mekanlarda çatlamaya ve kırılmaya karşı dayanıklı yapısıyla pratik ve ekonomik bir seçimidir.

It is ideal for private and public spaces thanks to its high technical competence. It is safe to use in spaces with heavy traffic or high strength. It does not break easily on curved surfaces like other types of ceramics due to its thickness and durability. With its structure that is resistant to cracking and breaking, it is a practical and economic choice for hotels, corporate companies, spacious offices, and kitchens, and spaces with heavy materials that have the risk of falling.

20 mm and 30 mm Durastone ceramic tiles can be laid dry by using grass gravel and sand substrates for building walkways. It does not break easily on curved surfaces like other types of ceramics due to its thickness and durability. With its structure that is resistant to cracking and breaking, it is a practical and economic choice for hotels, corporate companies, spacious offices and kitchens, and spaces with heavy materials that have the risk of falling.



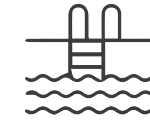
Dış mekan
Outdoor



Balkon, teras ve verandalar
Balconies, terraces and verandas



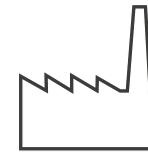
Havalimanları, metro ve tren istasyonları
Airports, metro and train stations



Havuz çevresi ve spor salonları
Pool surroundings and gyms



Otopark ve garajlar
Parking lots and garages



Endüstriyel ve ticari alanlar
Industrial and commercial areas



Park, bahçe ve dinlenme alanları
Parks, gardens and recreation areas



Plaj ve kum zeminler
Beach and sand floor



Yoğun trafiğin ve aşınmanın yaşandığı alanlar
Spaces with heavy traffic and abrasion



Yükseltilmiş zemin ihtiyacı olan yerler
Spaces requiring elevated floors



Çakıl Üzeri Uygulama
Installation On Gravel



Yükseltilmiş Zemin Üzeri Uygulama
Installation On Elevated Floor



Klasik Harçlı Uygulama
Installation With Mortar



Çim Üzeri Uygulama
Installation On Grass



Kum Üzeri Uygulama
Installation On The Sand



UYGULAMA ÖNERİLERİ

RECOMMENDATIONS FOR INSTALLATION

Çim Üzeri Uygulama

Installation On Grass



A - 5cm çakıl katmanı (çakıl boyutu 4/8mm)
A - Layer of gravel 5cm (granulometry 4/8mm)

B - Toprak
B - Soil

Çakıl Üzeri Uygulama

Installation On Gravel



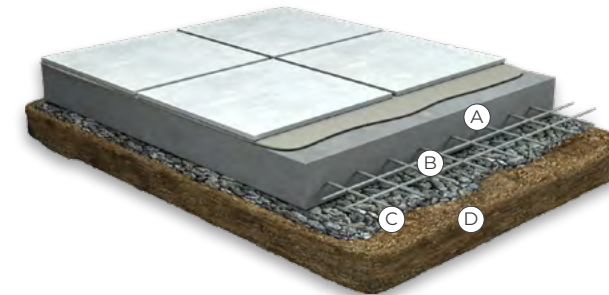
A - 5cm çakıl katmanı (çakıl boyutu 4/8mm)
A - Layer of gravel 5cm (granulometry 4/8mm)

B - Drenaj
B - Draining layer

C - Toprak
C - Soil

Klasik Harçlı Uygulama

Installation With Mortar



A - Harç
A - Adhesive

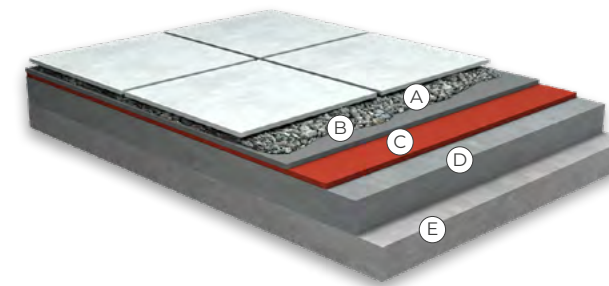
C - Drenaj
C - Draining layer

B - Elektro kaynaklı beton temel katmanı
B - Footing with electro-welded net

D - Toprak
D - Soil

Kaldırımlar İçin Çakıl Üzeri Uygulama

Dry-system Installation on Gravel



A - Çakıl Yatağı
A - Gravel bed

D - Eğimli döşeme katmanı
D - Inclined footing

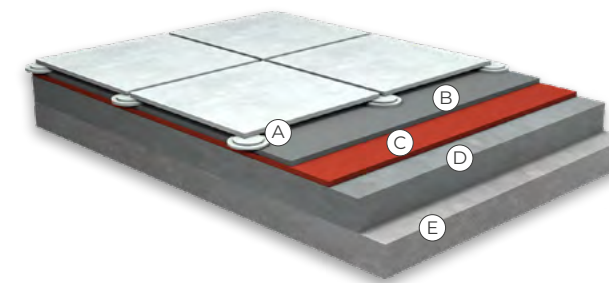
B - Drenaj
B - Draining layer

E - Toprak
E - Soil

C - Su geçirmez katman
C - Water-proofing sheath

Yükseltilmiş Zemin Üzeri Uygulama

Installation On Elevated Floor



A - Ayaklar
A - Supports

D - Eğimli döşeme katmanı
D - Inclined footing

B - Drenaj
B - Draining layer

E - Toprak
E - Soil

C - Su geçirmez katman
C - Water-proofing sheath



ÇİM ÜZERİ UYGULAMA

INSTALLATION ON GRASS

20mm ve 30mm Durastone porselen karoları, kuru uygulama seçenekleri ile kimseye ihtiyaç duymadan kolayca döşeme yapabilmeye olanak sağlar. Derz ya da yapıştırıcı kullanılmayıp kuru uygulama yapılan “Çim Üzeri Kuru Uygulama” pratik olduğu kadar çevrecidir. Uygulama oldukça basit bir iki adımdan oluşmakta olup usta yardımı gerekmeden yapılabilmektedir. Kuru döşenen sistem üzerinde hemen yürümeye başlanabilir.

Uygulama;

- Çim karonun alanı kadar bölümü (yaklaşık 6/7 cm kadar) kazılır.
- 3cm geçmeyecek şekilde ince bir çakıl katmanı oluşturulur.
- Karonuzu bu alanın üstüne koymanızla bitecek olan bu uygulamada karonun çim seviyesinin yaklaşık 1-2 cm kadar aşağıda kalmasına dikkat etmeniz yeterli olacaktır.

With their dry installation options, 20 mm and 30 mm Durastone porcelain tiles allow you to lay your tiles without any help. “Dry Installation on Grass”, which involves dry laying without using adhesives or the joints, is both environment-friendly and practical. Installation requires a few simple steps, and it can be performed without the help of a workman. You can start walking immediately on the dry-laid system.

Installation;

- The grass is excavated in the size of the tile (about 6/7 cm).
- A fine gravel layer is created without exceeding 3 cm.
- In this installation, which will be finalized as soon as you place your tile on this layer, all you need to do is to ensure that the tile is approximately 1-2 cm below the level of the grass.



ÇAKIL ÜZERİ UYGULAMA

INSTALLATION ON GRAVEL

Çim üzerine yapılan uygulama gibi çok basit bir uygulama olan “Çakıl Üzerine Kuru Uygulama” özellikle yağmur sularının tahliyesine olanak sağlar. Durastone porselen karoları yapıştırıcı derz ve döşeme işçiliği gerektirmediğinden kolay hızlı ve ekolojik olarak sürdürülebilir bir üründür.

Uygulama;

- İstenilen alana değişik boyutlarda 20cm geçmeyecek kalınlığında taş-çakıl karışımı dökülerek bir katman oluşturulur.
- Seçilen alana suyun akış yönüne göre biraz eğim verilir.
- Yüzeyin standart bir düzgünlüğe gelmesi sağlanır.
- Karoları dizdikten sonra aralara yine taş-çakıl karışımı dökülür ve lastik bir tokmak yardımıyla karoların zemine yerleşmesi sağlanır.

“Dry Installation on Gravel”, which is as simple as the installation on grass, allows the discharging of rainwater. Durastone ceramic tiles are fast and ecologically sustainable products since they do not require workmanship for the joints and tiling.

Installation;

- A layer is formed by filling the desired space with a mixture of gravels and stones in different sizes, with a thickness not exceeding 20 cm.
- A little slope is formed on the selected area according to the direction of the water flow.
- It is ensured that the surface reaches a standard smoothness.
- After laying the tiles, a mixture of stones and gravels is filled in between the tiles, and it is ensured that the tiles are fixed on the base with the help of a rubber mallet.





KUM ÜZERİ UYGULAMA

INSTALLATION ON THE SAND

20mm ve 30mm Durastone porselen karoları yürüme yolları ve yaya yolları yapmak için hızlı çözümler sunar. Pratik olduğu kadar ekolojik olan ürünler özellikle kum üzeri kuru uygulamada sıcaklık ön görülerek açık tonlarda kullanılması tavsiye edilir.

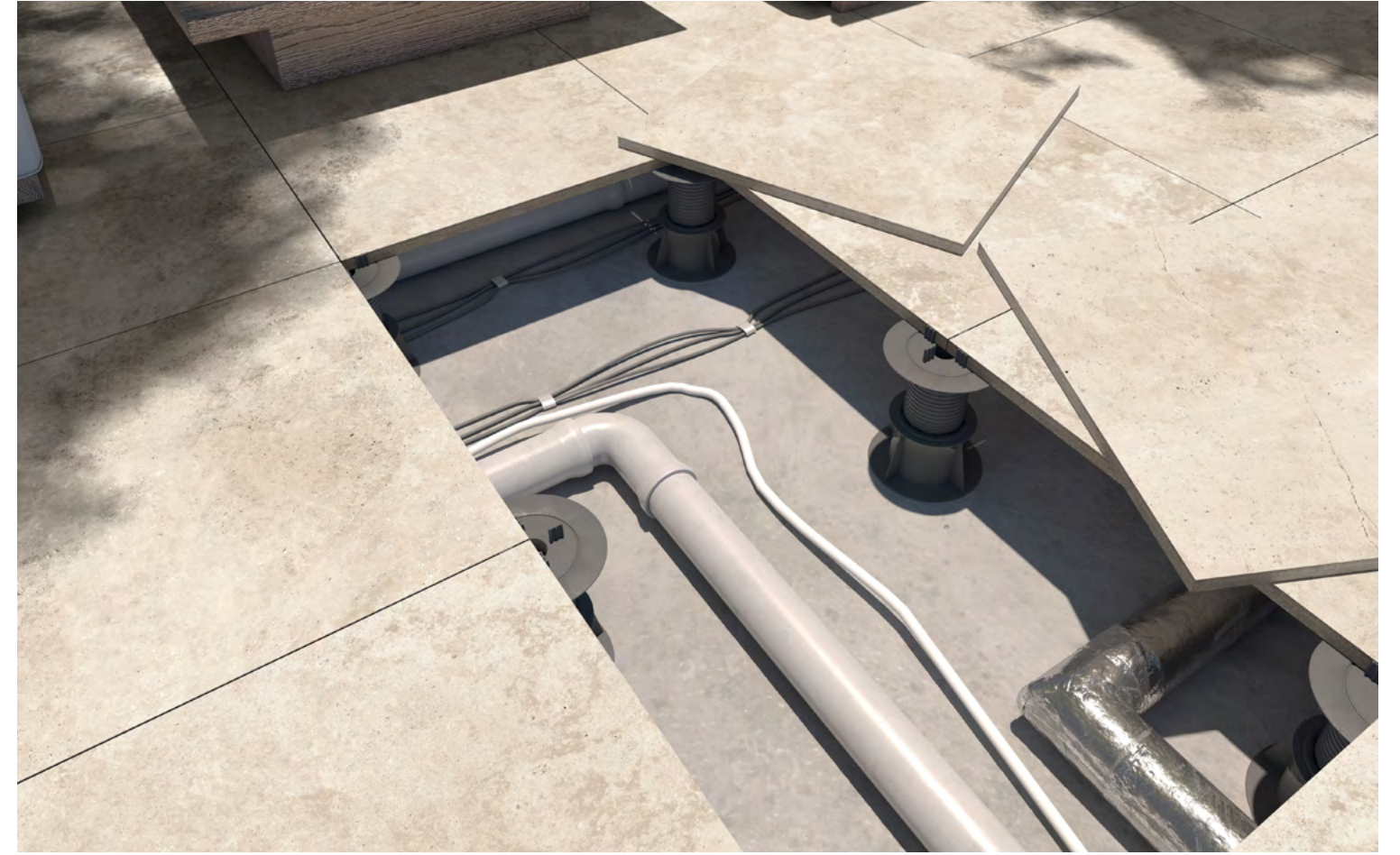
Uygulama;

- Kum alanda dengeleyici bir katman oluşturmak için masterla düzeltilmesi gerekmektedir.
- Karolar düzeltilmiş kum alanın üzerine belirlenen aralıklarla dizilir.
- Arzu edilirse karolar arasında ki boşluklar tekrar kumla doldurulabilir.

20 mm and 30 mm Durastone ceramic tiles provide rapid solutions for building walkways and pedestrian paths. It is recommended that these practical and ecological products are preferred in light colors especially in installation on the sand, considering the temperature.

Installation;

- The sand area needs to be improved with a screed to create a stabilizing layer.
- Tiles are placed on the leveled sand area at specified intervals.
- If desired, the gaps between the tiles can be filled with sand again.



YÜKSELTİLMİŞ ZEMİN UYGULAMA

INSTALLATION ON ELEVATED FLOOR

20mm ve 30mm Durastone porselen karoları yükseltme aparatlarıyla kullanılarak zemin problemleri pratik şekilde çözümlenir. Zemin yükseltme aparatları ile su, elektrik, aydınlatma vb her türlü tesisat rahatlıkla döşenebilir.

Uygulama;

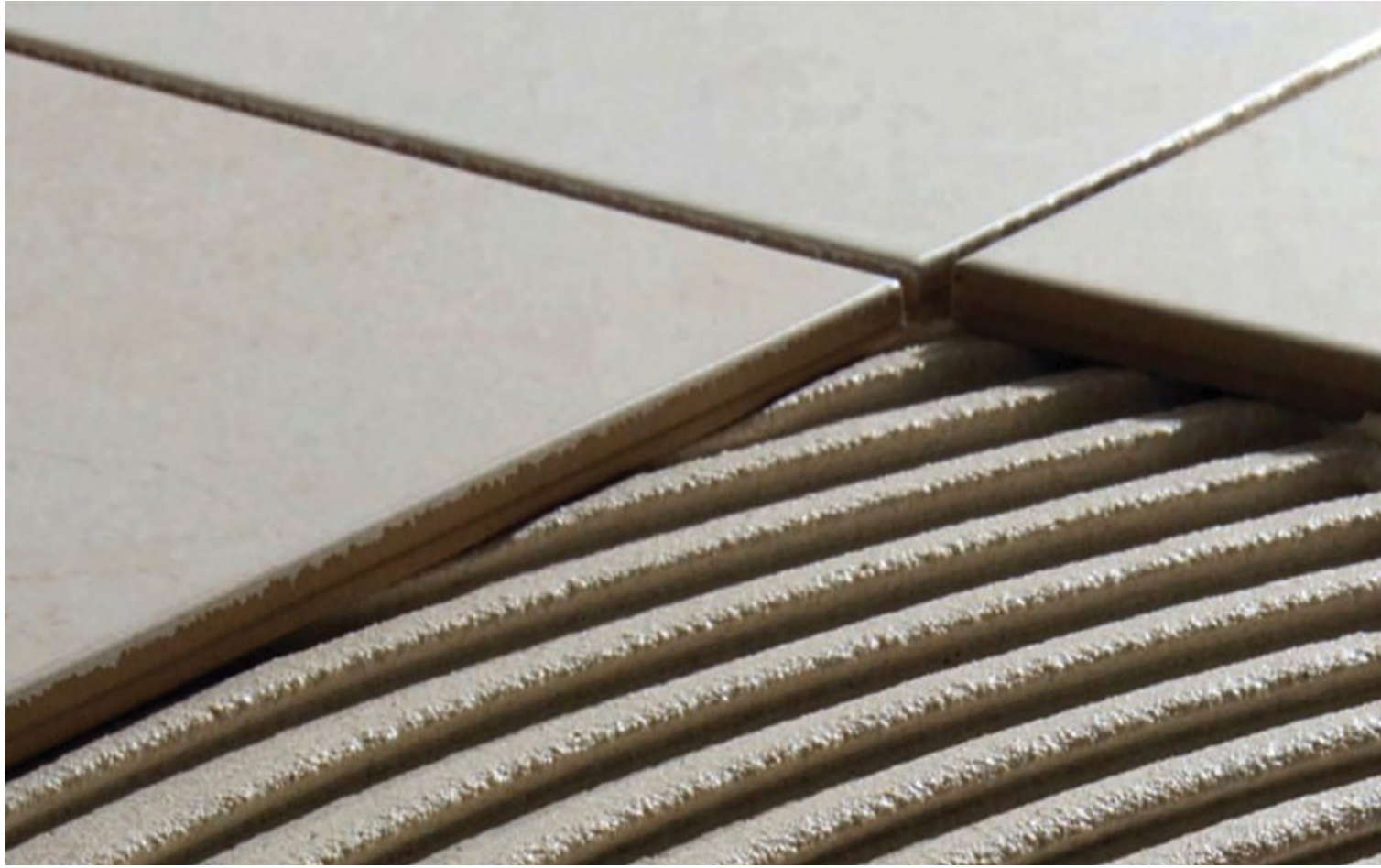
- Karolar ister çökme problemi olan ister eğimlerden oluşan bir alana aparatlarla tesviye yapılmadan uygulanabilmektedir.
- Karo köşelerine yerleştirilen aparatların gerek eğim gerekse de yoğun yay ve yük trafiğinin olduğu alanlarda karonun ortalarına da birer adet konulması tavsiye edilmektedir.
- Aparatların yükseklik ayarları sayesinde zemin problemlerinin olduğu alanlarda yüzey yüksekliğinin eşitliği sağlanabilir.
- Karolarda ya da aparatlarda yaşanan sıkıntılar halinde kolayca değişim yapılabilir.

The problems with floors can be eliminated practically by using 20 mm and 30 mm Durastone ceramic tiles with elevation tools. All types of installations including electricity, water, lighting, etc. can be easily installed using the elevation tools.

Installation;

- Tiles can be installed on an area with collapse problems or slopes without leveling with the help of the tools.
- It is recommended to place the tools on the corners of tiles, using one tool for each tile in areas with slopes or heavy traffic or loads.
- Thanks to the height adjustments of the tools, the height of the surface can be equalized in areas with floor problems.
- In case of any problems, both tiles and tools can be easily replaced.





HARÇLI UYGULAMA

INSTALLATION WITH MORTAR

20 mm ve 30mm Durastone porselen karoları geleneksel yapıştırıcı tekniği uygulamalarında özel kalınlıkları sayesinde kırılma ve çatlamalara karşı üstün dayanıklılık gösterir. Bu uygulama araç geçebilir endüstriyel ve ticari zeminler, giriş rampaları ve garajlar için idealdir.

Uygulama;

- Yüksek performansa sahip ,çimento bazlı yapıştırma harcı uygulama öncesi hazırlanır.
- Hazırlanan bu harç hem karoya hem de zemine uygulanır.
- Bir gün kadar iyice kurumaya bırakılır.
- Karoların arasına derz uygulaması yapılır.
- Yüzey kurumadan derz kalıntılarından arındırılır.

20 mm and 30 mm Durastone ceramic tiles have superior resistance to breakage and cracking in installations with traditional adhesives, thanks to their special thickness. This type of installation is ideal for vehicular, industrial, and commercial floors, access ramps and garages.

Installation;

- The cement-based adhesive mortar with high performance is prepared before installation.
- This mortar is applied both on the floor and the tile.
- It is left to dry for one day.
- The gaps between the tiles are filled in with the joint.
- The surface is cleared of the joint residues before it dries.



Ebatlar SIZES

Durastone Ebat ve Kalınlık Seçenekleriyle **Dayanıklı, Pratik ve Fonksiyoneldir.**

Durastone is Durable, Practical and Functional With Its Size and Thickness Options

Yüksek teknolojiler kullanılarak üretilen Durastone porselen karoları ebat ve kalınlık seçeneğinin zenginliği sayesinde her türlü mimari soruna inovatif çözümler sunabilme kabiliyetine sahiptir. 20 mm kalınlıkta 9 ebat, 30 mm kalınlıkta ise 2 farklı ebat seçeneği ile Durastone porselen karoları özgün mekanlar yaratır.

Durastone ceramic tiles, which are produced using advanced technologies, offer innovative solutions to all kinds of architectural problems thanks to the rich size and thickness options. Durastone ceramic tiles create unique spaces with 9 sizes with 20 mm thickness and 2 different sizes with 30 mm thickness.



✦ 30mm



✦ 20mm



KOLEKSİYON

COLLECTION

20mm ve 30mm kalınlık seçeneğiyle Durastone, seramiğin üstün özelliklerini kusursuz tasarım diliyle harmanladığı bir koleksiyon sunuyor.

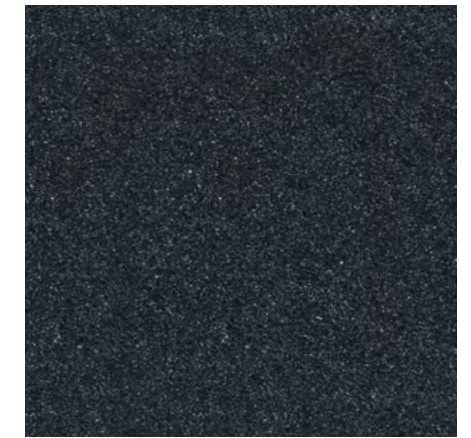
With its 20 mm and 30 mm thickness options, Durastone offers a collection that blends the superior features of ceramic with a flawless design.





AMATA
60x60 BEIGE

ALFA



Black



Grey

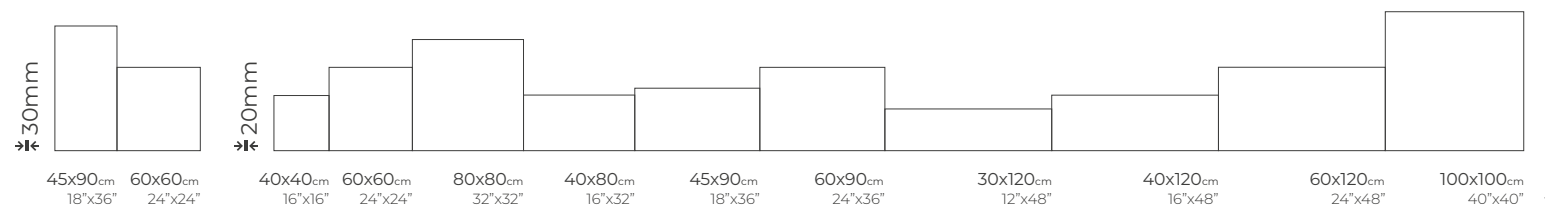
AMATA

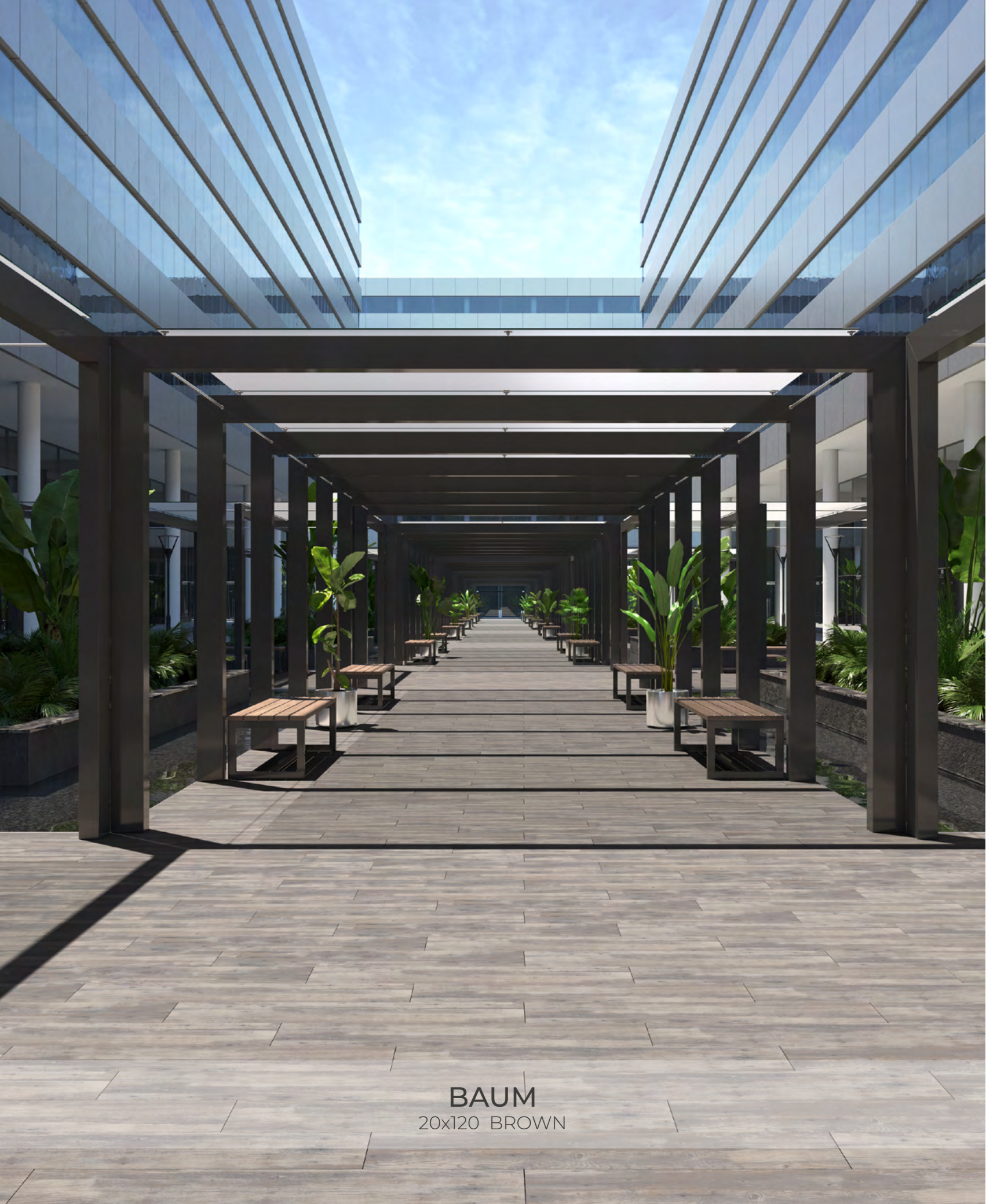


Anthracite

Beige

Brown





BAUM
20x120 BROWN

ARENA



Grey



Black



BAUM



Light



Dark



Brown



ELEGANCE



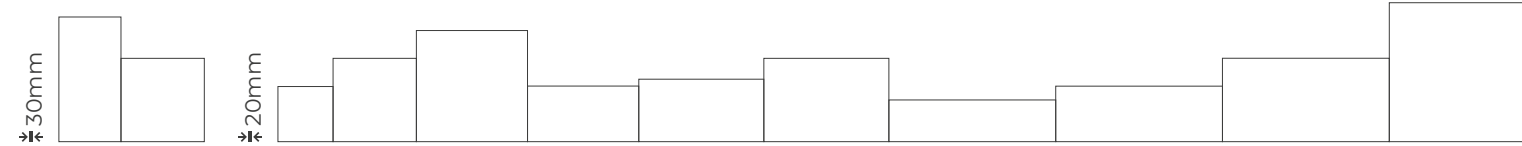
Anthracite



Beige



Grey

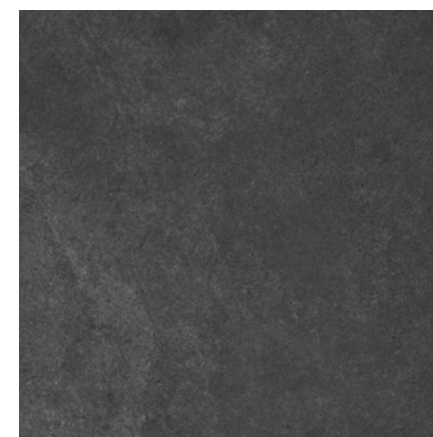


45x90cm 18"x36"	60x60cm 24"x24"	40x40cm 16"x16"	60x60cm 24"x24"	80x80cm 32"x32"	40x80cm 16"x32"	45x90cm 18"x36"	60x90cm 24"x36"	30x120cm 12"x48"	40x120cm 16"x48"	60x120cm 24"x48"	100x100cm 40"x40"
--------------------	--------------------	--------------------	--------------------	--------------------	--------------------	--------------------	--------------------	---------------------	---------------------	---------------------	----------------------



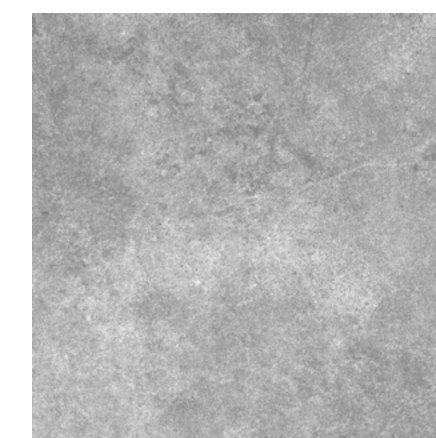
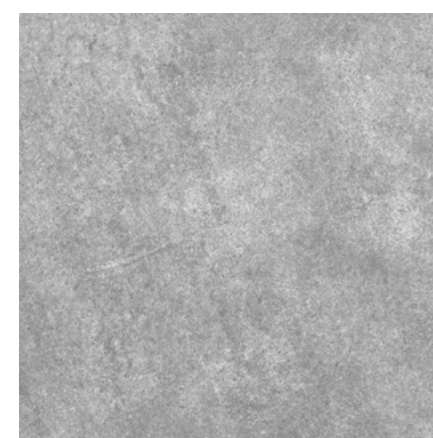
ATLANTA
60x60 GREY

ATLANTA



- FACE 6
- M
- SB
- R

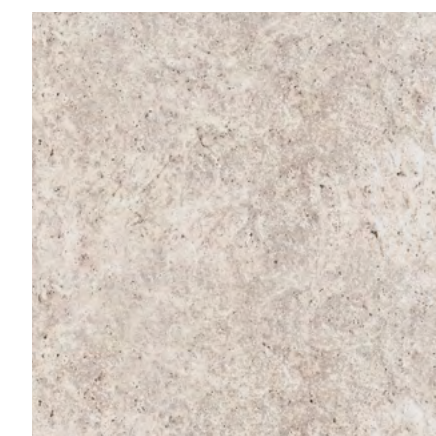
Anthracite



- FACE 6
- M
- SB
- R

Grey

BELENCO

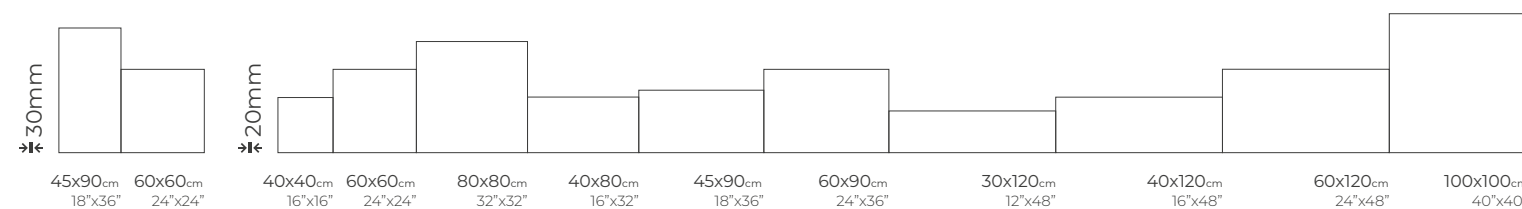


- M
- FB
- R

Grey

Ice

Sand



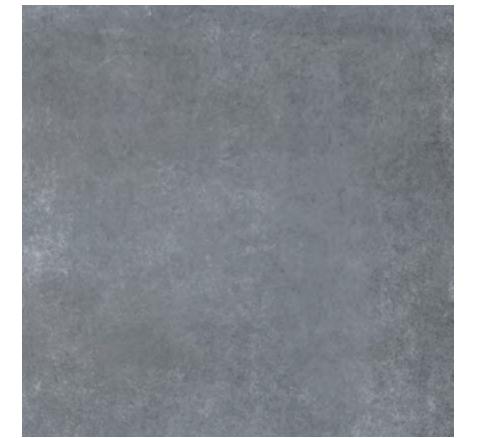


AUTOMIUM
60x60 ANTHRACITE

AUTOMIUM



Dark Grey



Anthracite



PIETRA



Black



Anthracite



Grey



BOTTICINO



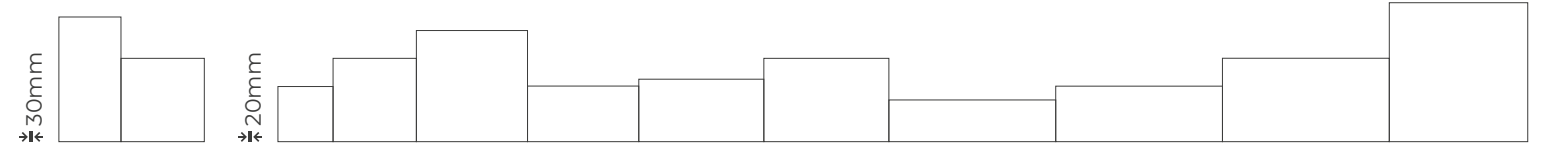
Grey



Taupe



Natural

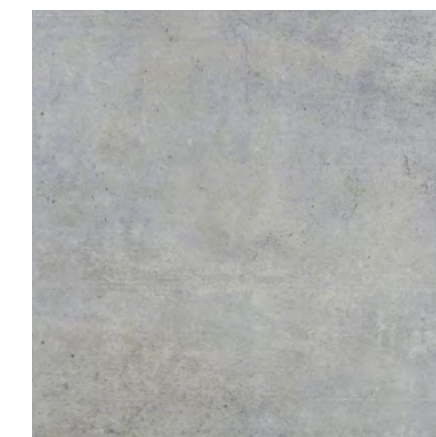
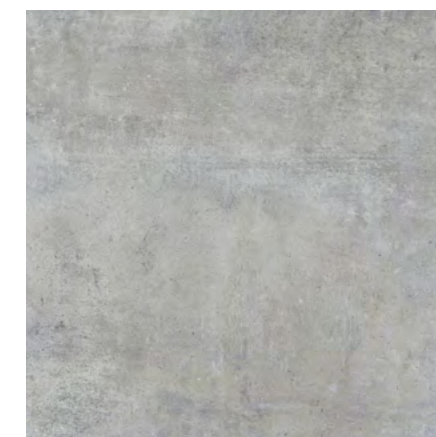
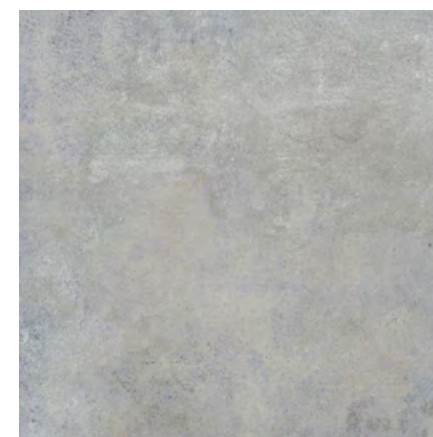


45x90cm 18"x36"	60x60cm 24"x24"	40x40cm 16"x16"	60x60cm 24"x24"	80x80cm 32"x32"	40x80cm 16"x32"	45x90cm 18"x36"	60x90cm 24"x36"	30x120cm 12"x48"	40x120cm 16"x48"	60x120cm 24"x48"	100x100cm 40"x40"
--------------------	--------------------	--------------------	--------------------	--------------------	--------------------	--------------------	--------------------	---------------------	---------------------	---------------------	----------------------



BETON
60x60 SOFT MID

BETON



- M
- ❄️
- ✍️
- R

Soft Dark



- M
- ❄️
- ✍️
- R

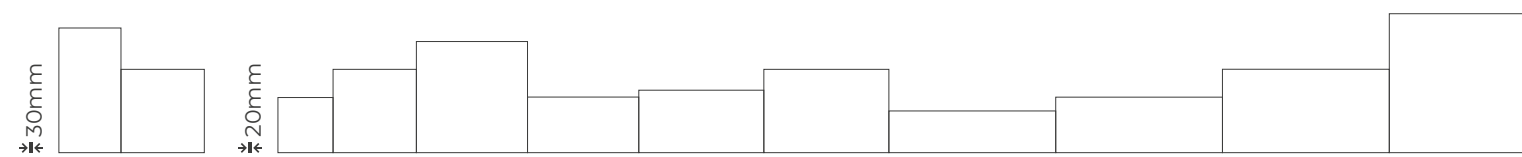
Soft Mid

BELGIAN BLUE



- M
- ❄️
- FB
- SB
- ✍️
- R

Dark Grey



45x90cm 18"x36"	60x60cm 24"x24"	40x40cm 16"x16"	60x60cm 24"x24"	80x80cm 32"x32"	40x80cm 16"x32"	45x90cm 18"x36"	60x90cm 24"x36"	30x120cm 12"x48"	40x120cm 16"x48"	60x120cm 24"x48"	100x100cm 40"x40"
--------------------	--------------------	--------------------	--------------------	--------------------	--------------------	--------------------	--------------------	---------------------	---------------------	---------------------	----------------------



CALMENTE
60x60 GREY

CARINE



Light Grey



Dark Grey



Black



RIVESTIMENTO



Blanco



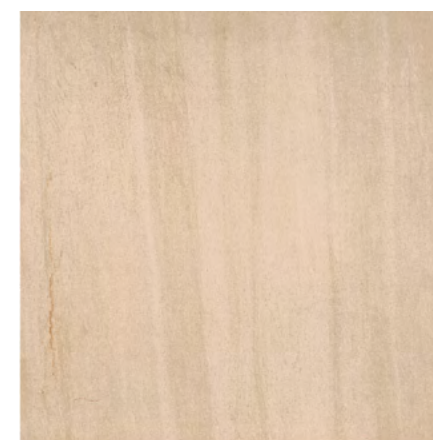
Grey



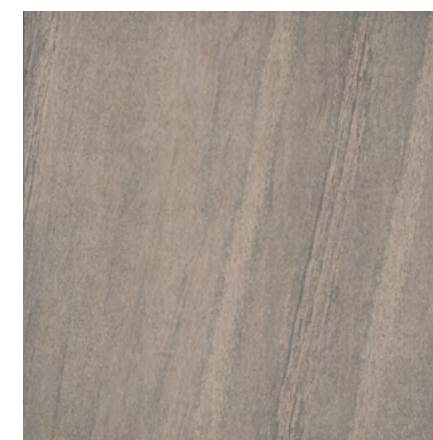
Anthracite



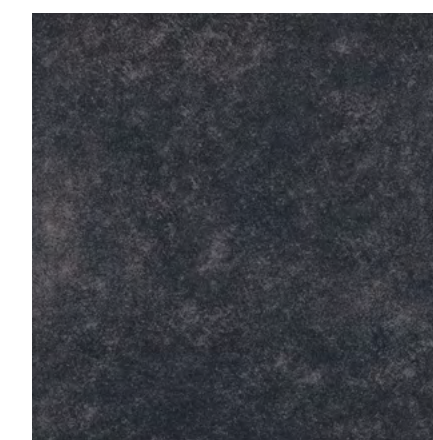
CALMENTE



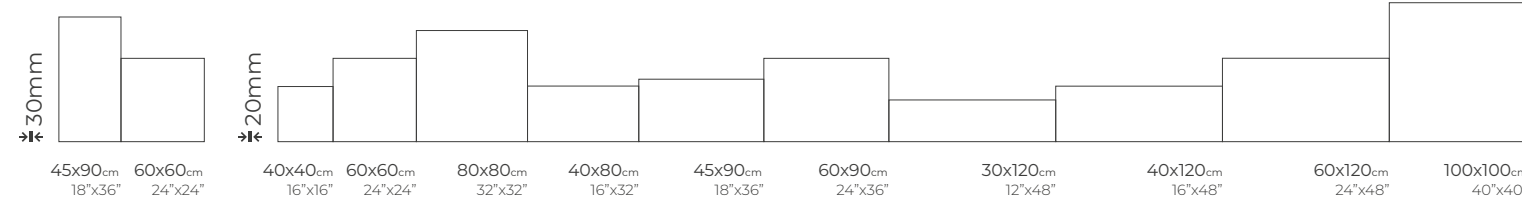
Beige



Grey



Black





BLUESTONE
60x60 BLACK

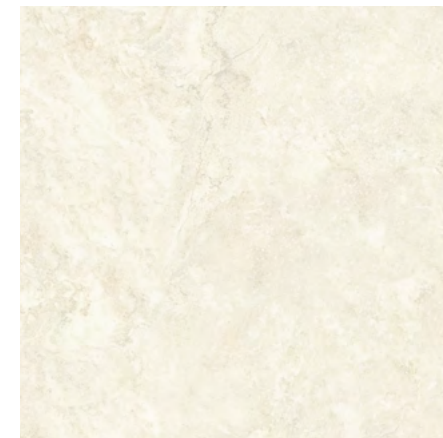
COMO



Beige



Grey



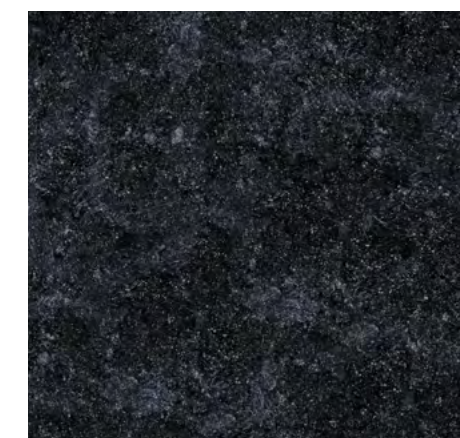
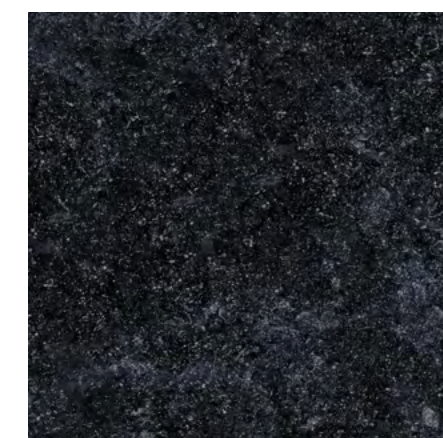
Sand



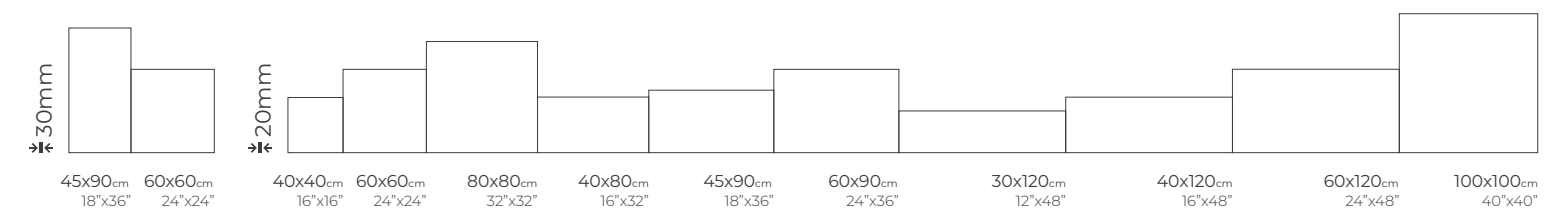
Ash



BLUE STONE



Black





DEEP
60x60 BROWN

COTTO



Beige



Anthracite



Blanco



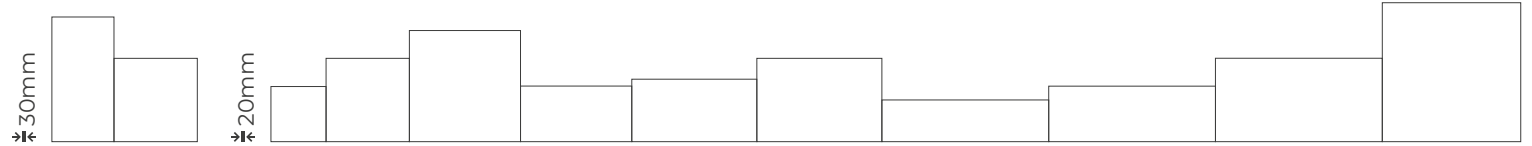
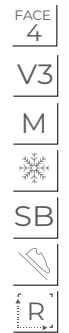
Grey



DEEP



Black



45x90cm 18"x36"	60x60cm 24"x24"	40x40cm 16"x16"	60x60cm 24"x24"	80x80cm 32"x32"	40x80cm 16"x32"	45x90cm 18"x36"	60x90cm 24"x36"	30x120cm 12"x48"	40x120cm 16"x48"	60x120cm 24"x48"	100x100cm 40"x40"
--------------------	--------------------	--------------------	--------------------	--------------------	--------------------	--------------------	--------------------	---------------------	---------------------	---------------------	----------------------



PASIFICO
60x60 NATURAL

DUDEN



- M
- ❄️
- ✂️
- R

Beige



- M
- ❄️
- ✂️
- R

Bone

PASIFICO

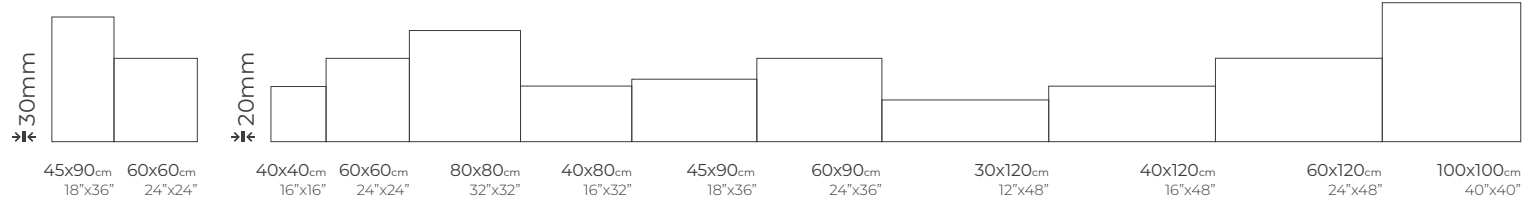


- FACE 4
- M
- ❄️
- SB
- ✂️
- R

Grigio

Natural

Avana





GRANIT
60x60

ENSTONE



Sabbia



Anthracite



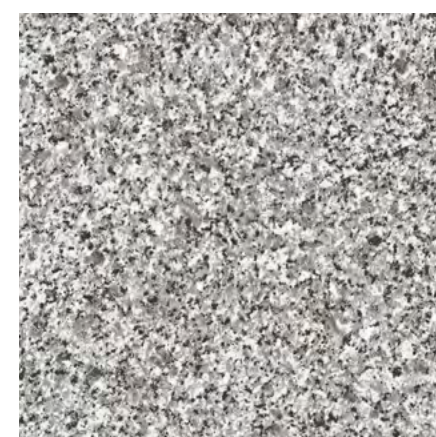
Ivory



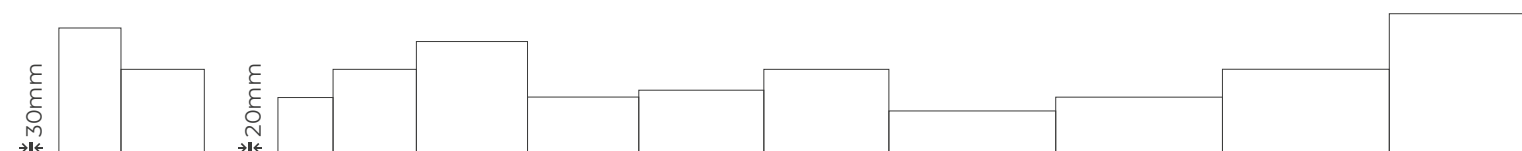
Grey



GRANIT



Mix





ERA
60x60 SAND

ERA



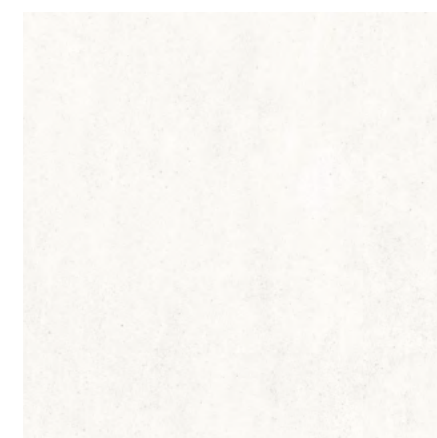
Camel



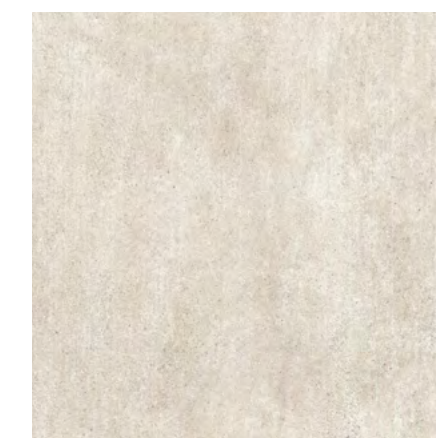
Grey



Anthracite



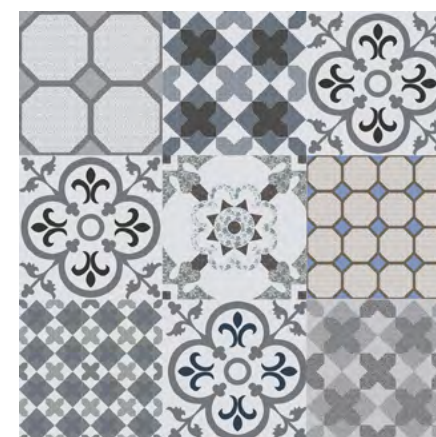
White



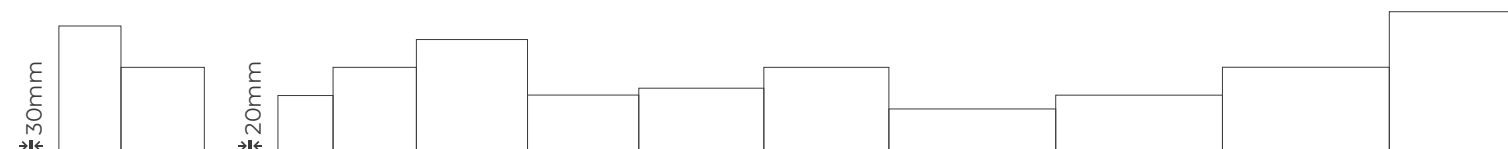
Sand



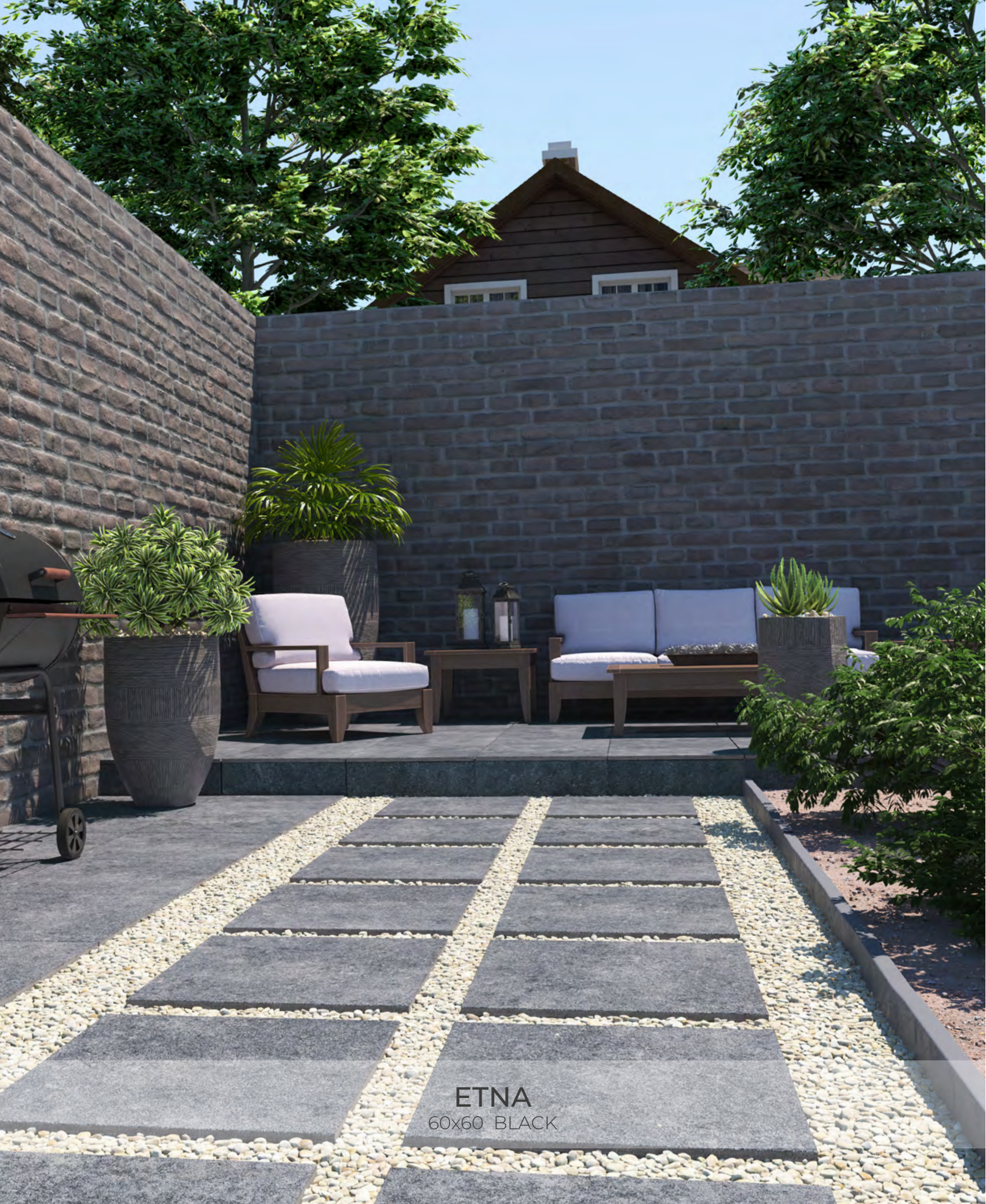
LABRANDA



Mix Decor

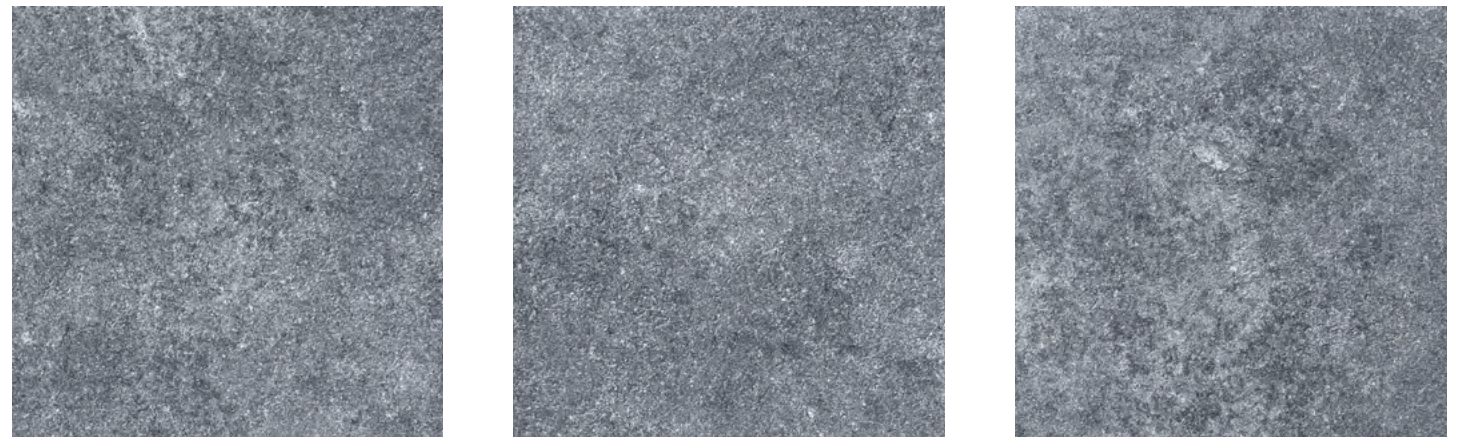


45x90cm 18"x36"	60x60cm 24"x24"	40x40cm 16"x16"	60x60cm 24"x24"	80x80cm 32"x32"	40x80cm 16"x32"	45x90cm 18"x36"	60x90cm 24"x36"	30x120cm 12"x48"	40x120cm 16"x48"	60x120cm 24"x48"	100x100cm 40"x40"
--------------------	--------------------	--------------------	--------------------	--------------------	--------------------	--------------------	--------------------	---------------------	---------------------	---------------------	----------------------



ETNA
60x60 BLACK

ETNA



- FACE
- 5
- M
- SP
- R

Black



- FACE
- 5
- M
- SP
- R

Grey

GRABEN

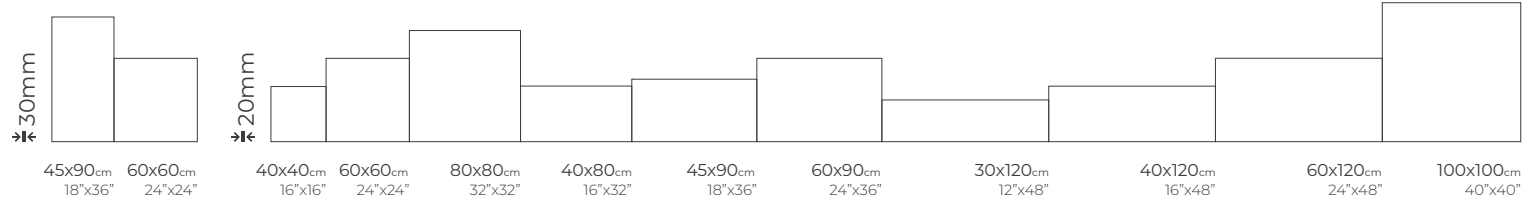


- M
- FB
- R

Cream

White

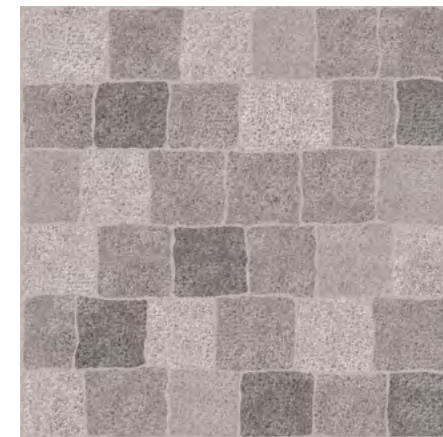
Grey





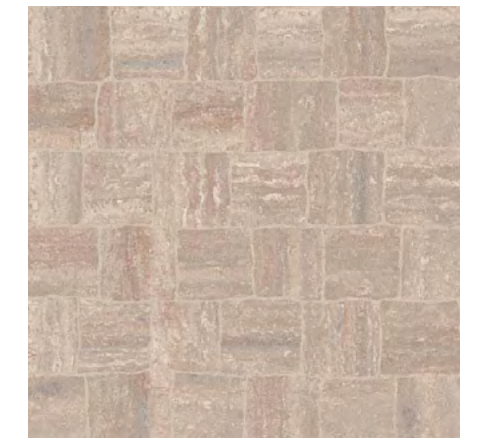
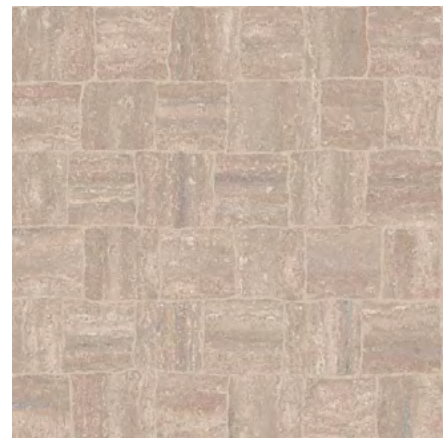
FLAGSTONE
60x60 GREY

FLAGSTONE



Grey

- FACE 9
- V3
- M
- SB
- R



Beige

- FACE 5
- V3
- M
- SB
- R

LEO

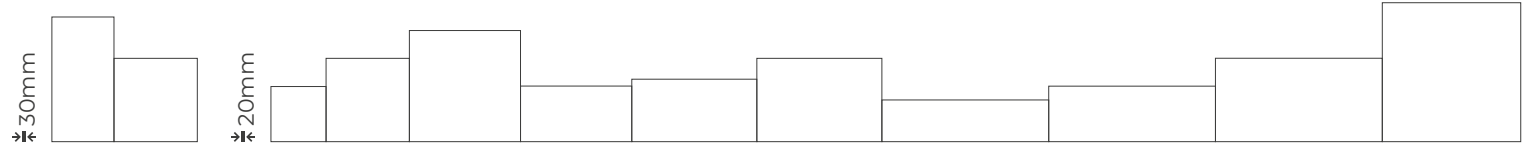


Sand

Grey

Black

- M
- FB
- R



45x90cm 18"x36"	60x60cm 24"x24"	40x40cm 16"x16"	60x60cm 24"x24"	80x80cm 32"x32"	40x80cm 16"x32"	45x90cm 18"x36"	60x90cm 24"x36"	30x120cm 12"x48"	40x120cm 16"x48"	60x120cm 24"x48"	100x100cm 40"x40"
--------------------	--------------------	--------------------	--------------------	--------------------	--------------------	--------------------	--------------------	---------------------	---------------------	---------------------	----------------------

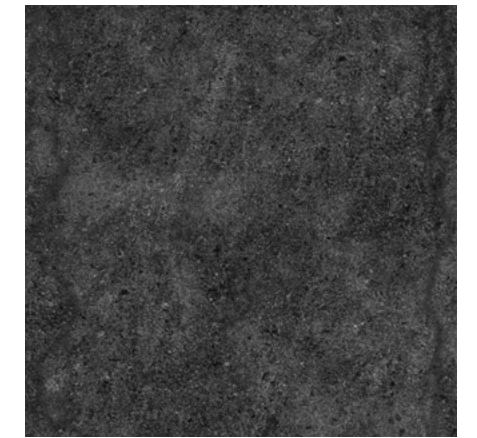


LUTTERUST
60x60

GALERIA



Silver



Black



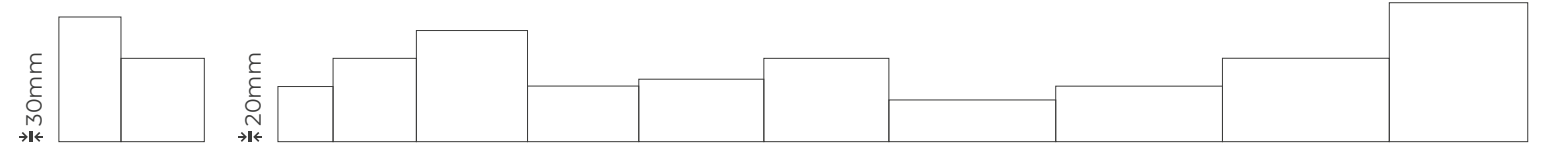
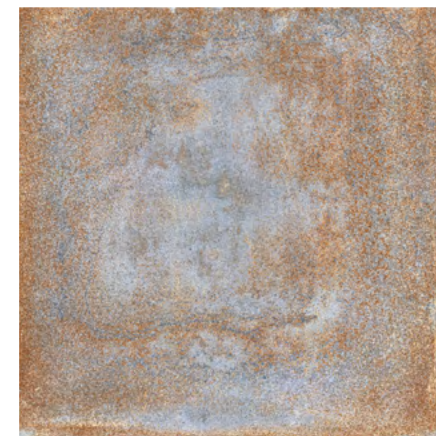
Bone



Taupe



LUTTERUST

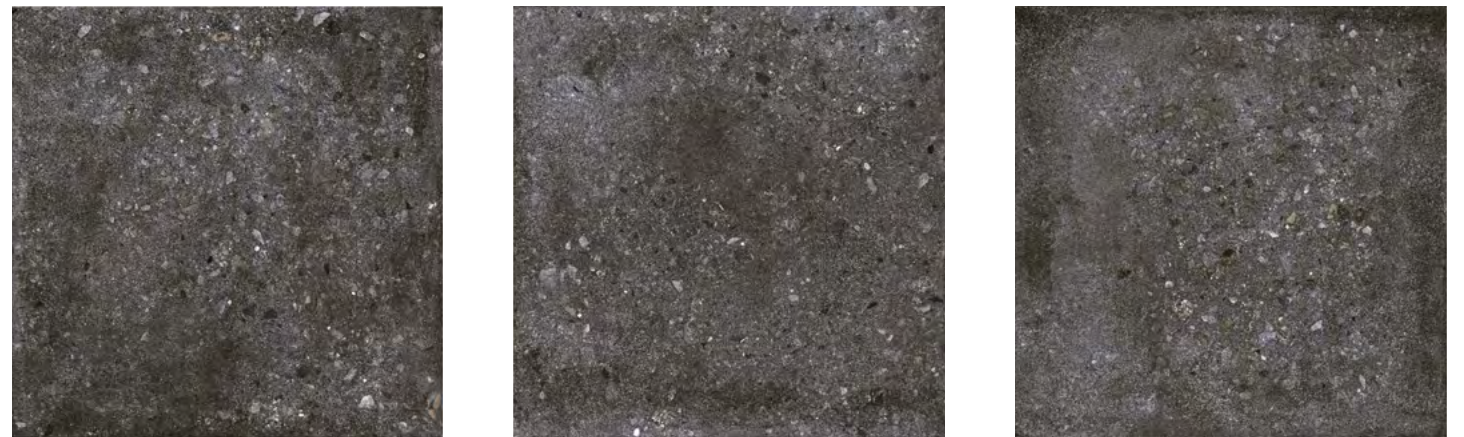


- 45x90cm
18"x36"
- 60x60cm
24"x24"
- 40x40cm
16"x16"
- 60x60cm
24"x24"
- 80x80cm
32"x32"
- 40x80cm
16"x32"
- 45x90cm
18"x36"
- 60x90cm
24"x36"
- 30x120cm
12"x48"
- 40x120cm
16"x48"
- 60x120cm
24"x48"
- 100x100cm
40"x40"



LUCCA
60x60 GREY

KATUNGA



Anthracite

FACE 6
V3
M
✪
✍
R



Grey

FACE 6
V3
M
✪
✍
R

LUCCA

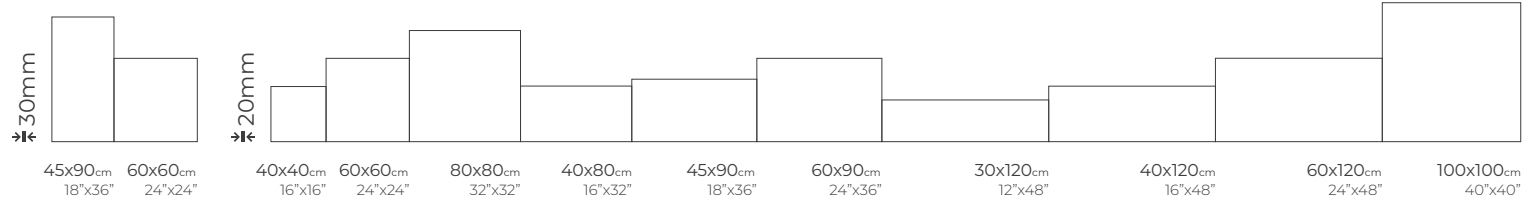


Ebony

Grey

Oak

FACE 8
V3
M
✪
✍
R





RENZO
60x60 GRAU

RENZO



Beige



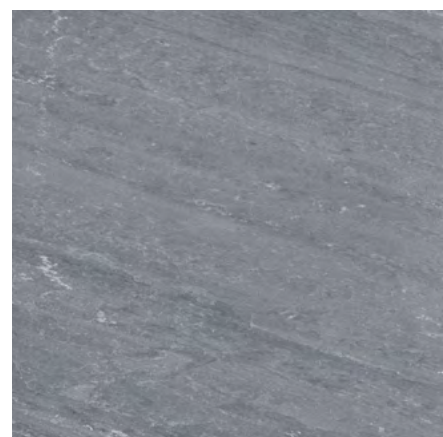
Grau



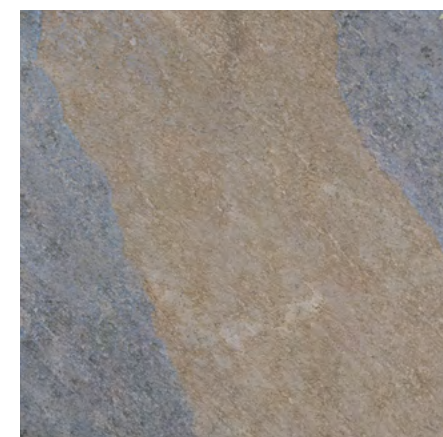
Anthracite

- FACE 9
- V3
- M
- ❄️
- ✍️
- R

PEDRA

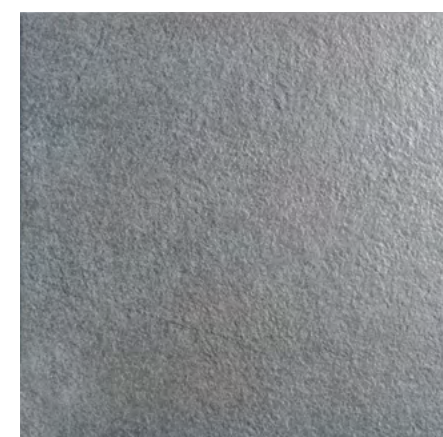


Azul



- M
- ❄️
- FB
- SB
- ✍️
- R

MANGAN

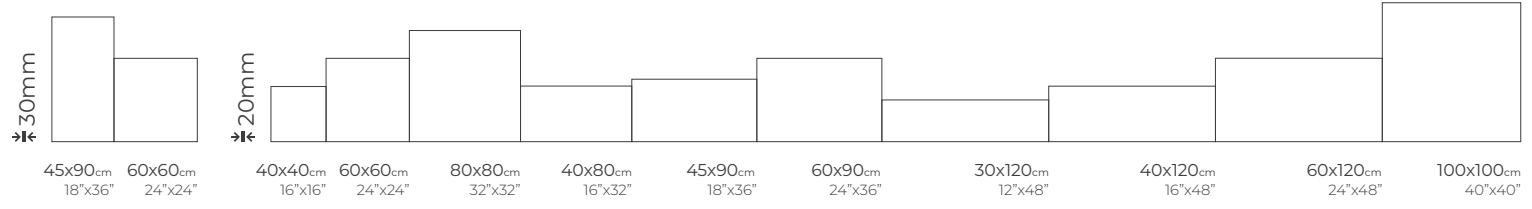


Grey



Black

- M
- ❄️
- FB
- ✍️
- R





MAYA
60x60 DUNKEL

MASSIMO



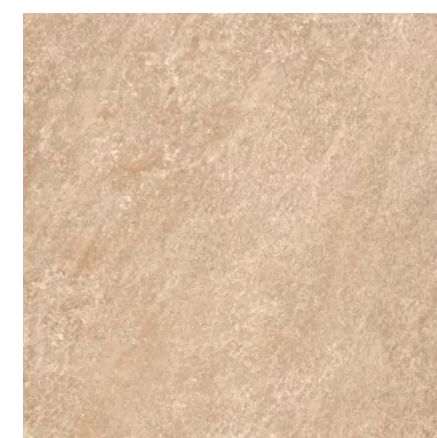
Grey



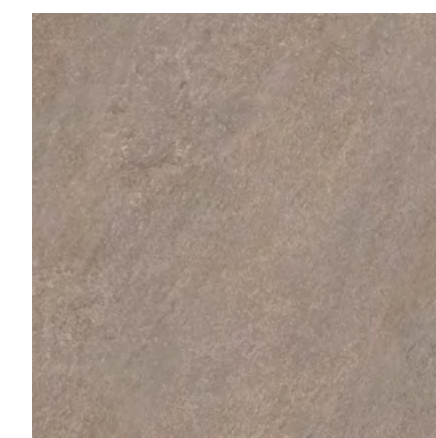
Dark Grey



Black



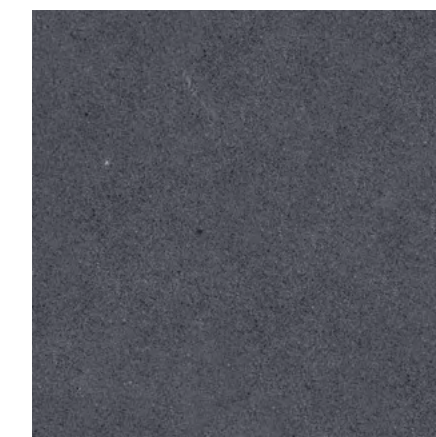
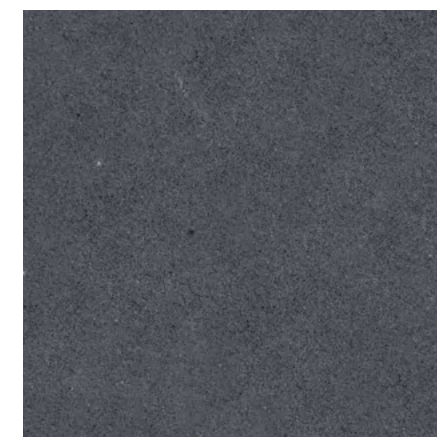
Beige



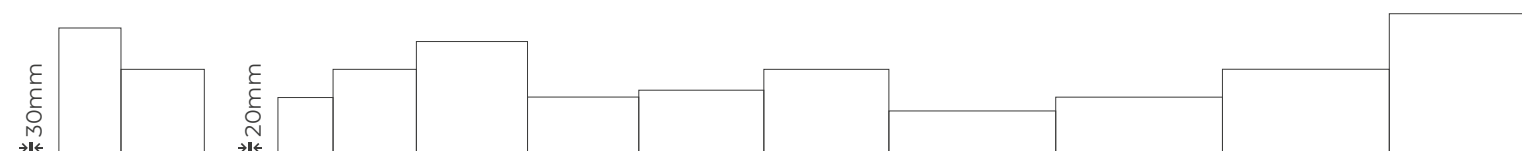
Grau



MAYA



Dunkel

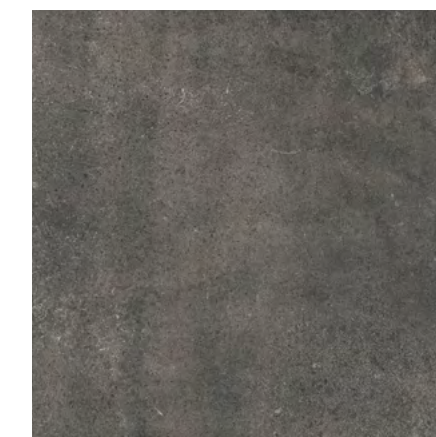
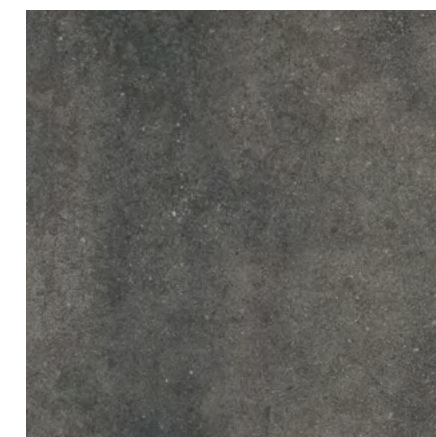


- 45x90cm
18"x36"
- 60x60cm
24"x24"
- 40x40cm
16"x16"
- 60x60cm
24"x24"
- 80x80cm
32"x32"
- 40x80cm
16"x32"
- 45x90cm
18"x36"
- 60x90cm
24"x36"
- 30x120cm
12"x48"
- 40x120cm
16"x48"
- 60x120cm
24"x48"
- 100x100cm
40"x40"



NORR
60x60 GREY

MATERIA

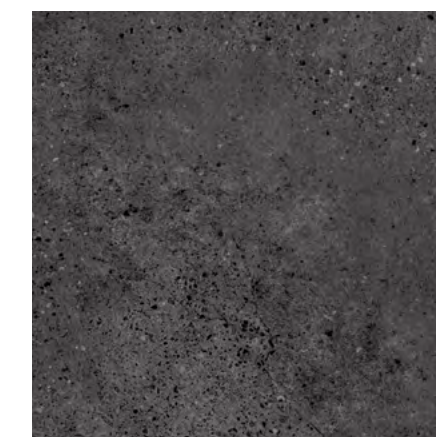


Graphite



Grau

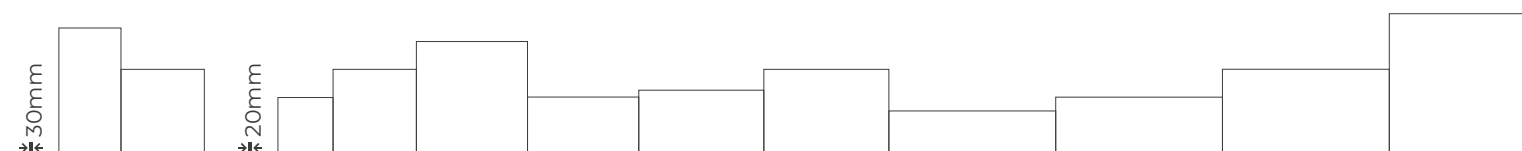
NORR



Sand

Grey

Anthracite



- 45x90cm
18"x36"
- 60x60cm
24"x24"
- 40x40cm
16"x16"
- 60x60cm
24"x24"
- 80x80cm
32"x32"
- 40x80cm
16"x32"
- 45x90cm
18"x36"
- 60x90cm
24"x36"
- 30x120cm
12"x48"
- 40x120cm
16"x48"
- 60x120cm
24"x48"
- 100x100cm
40"x40"



MISCHEN
60x60 GREY

MISCHEN



- FACE 6
- V3
- M
- ❄️
- ✍️
- R

Dark



- FACE 6
- V3
- M
- ❄️
- ✍️
- R

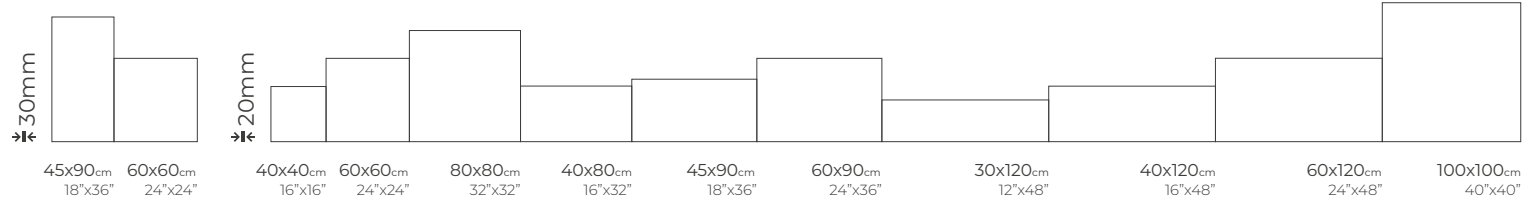
Light

MAPS



- M
- ❄️
- FB
- ✍️
- R

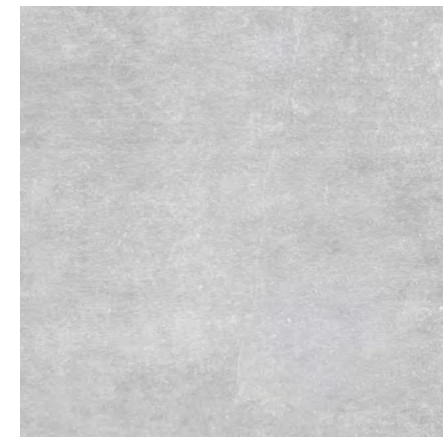
White





NEXUS
60x60 CLAY

NEXUS



Mica



Graphite



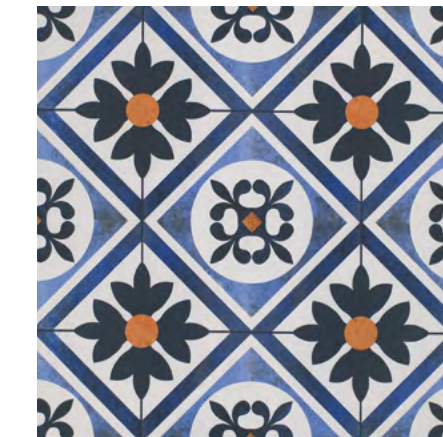
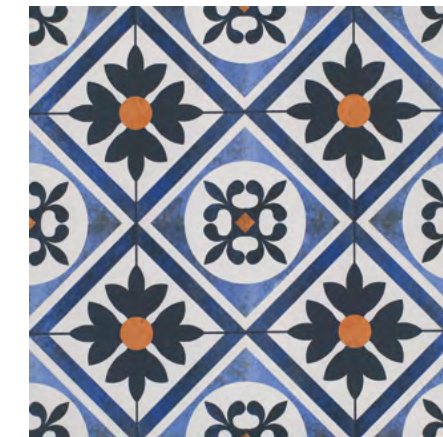
Clay



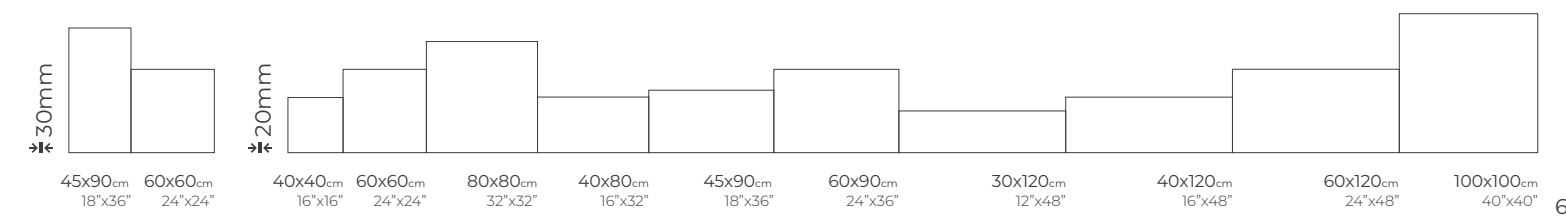
Ice



TOSCANA



Mix Decor





ONTARIO
60x60 GREY

ONTARIO



- FACE 5
- M
- FB
- SB
- R

Anthracite



- FACE 5
- M
- FB
- SB
- R

Grey

NUVOLA

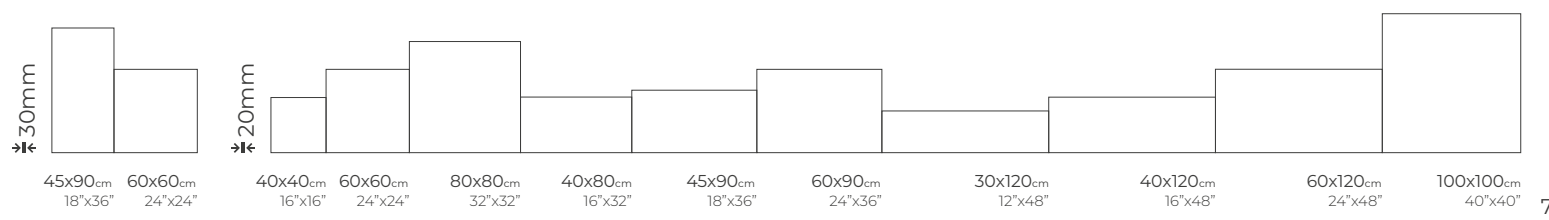


- M
- FB
- R

Taupe

Grey

Anthracite





TERRAZO
60x60 GLACIER

TERRAZO



- FACE 4
- V3
- M
- ❄️
- ✍️
- R

Gris



- FACE 4
- V3
- M
- ❄️
- ✍️
- R

Glacier

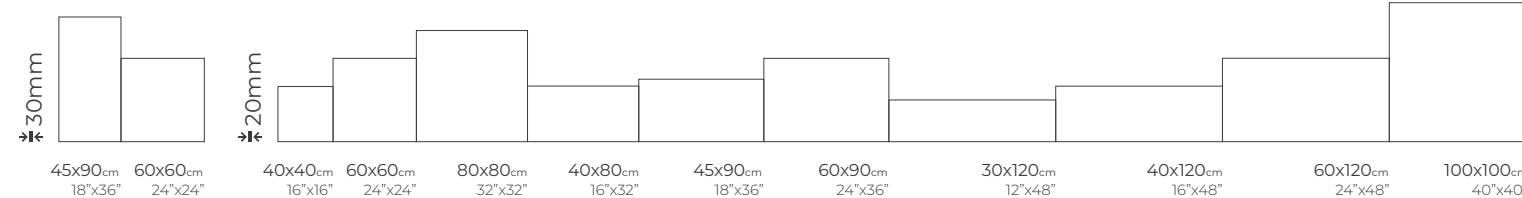
OHIO



- M
- ❄️
- SB
- ✍️
- R

Grey

Anthracite





OREGON
60x60 ANTHRACITE

OREGON



Anthracite



Black



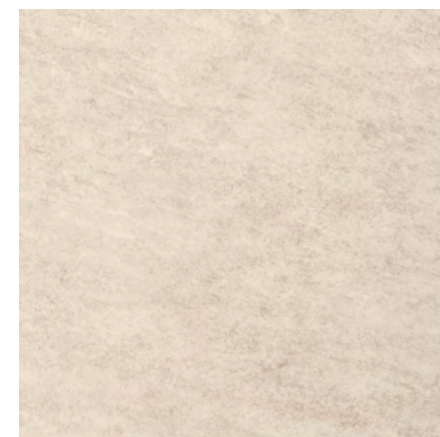
Sand



Grey



ORFE



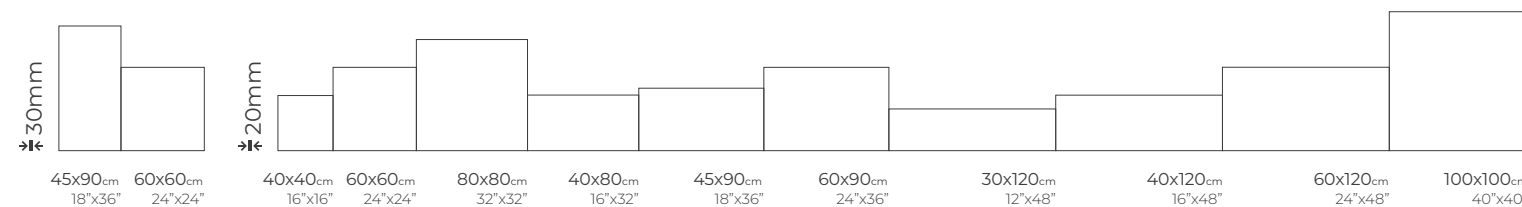
Beige



Grey



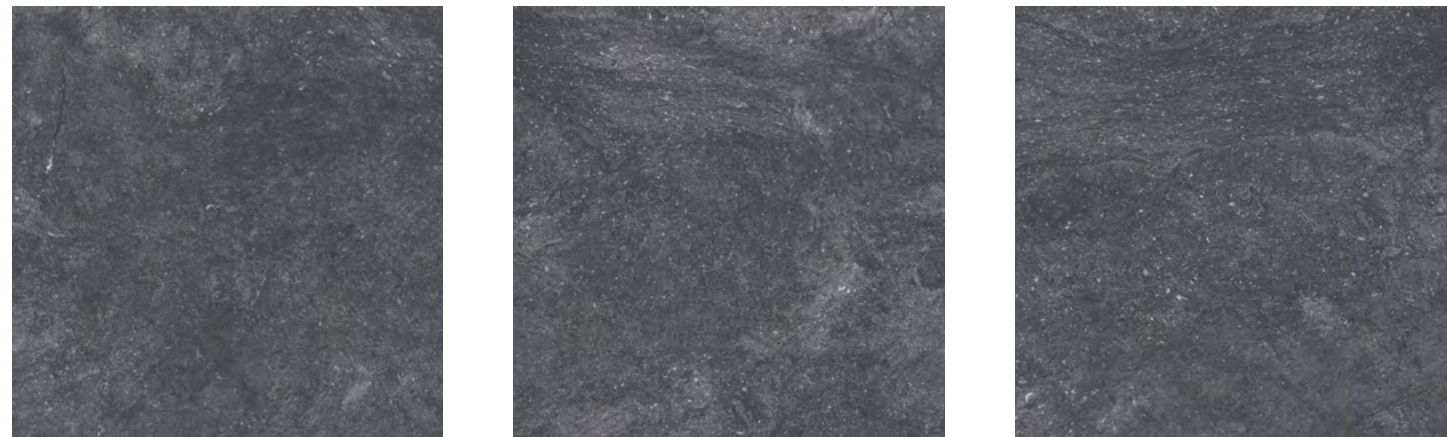
Anthracite





VALENTE
60x60 GRAPHITE

VULKON



- M
- ❄️
- ✍️
- R

Anthracite



- M
- ❄️
- SB
- ✍️
- R

Grey

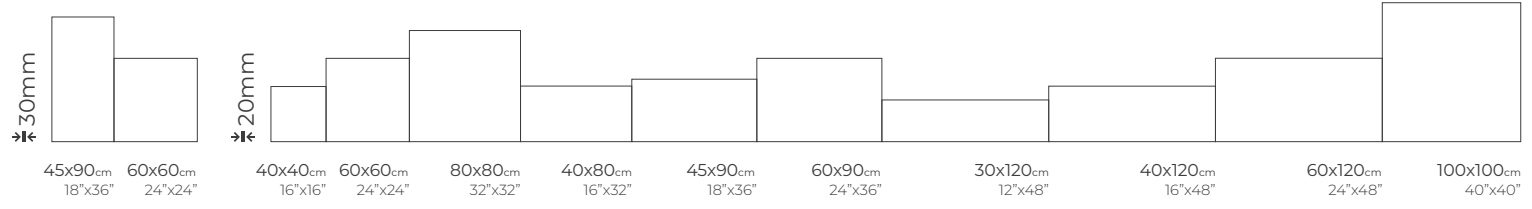
VALENTE



- FACE 3
- M
- ❄️
- ✍️
- R

Grau

Graphite





VIVID
60x60 GREY

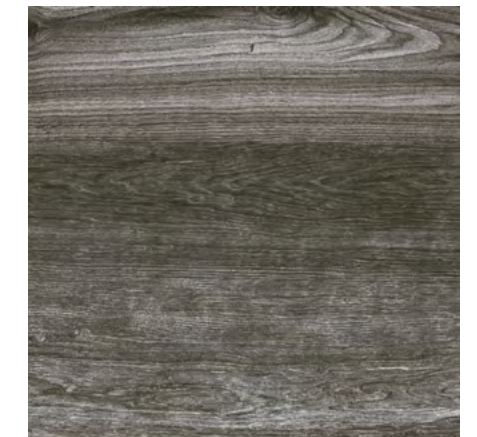
PALMWOOD



Natura



Walnut



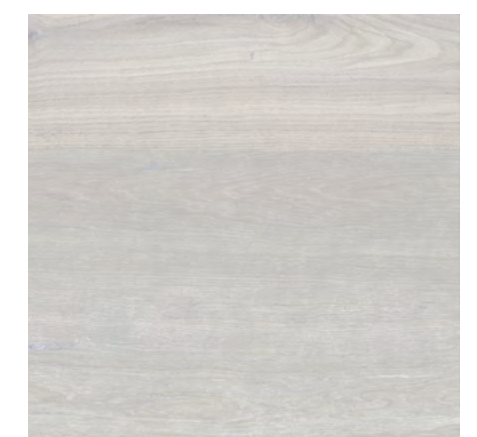
Anthracite



Beige



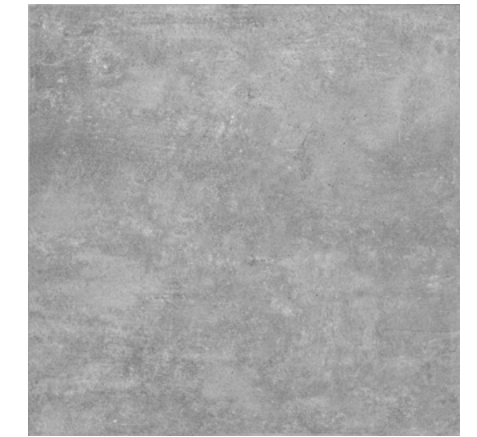
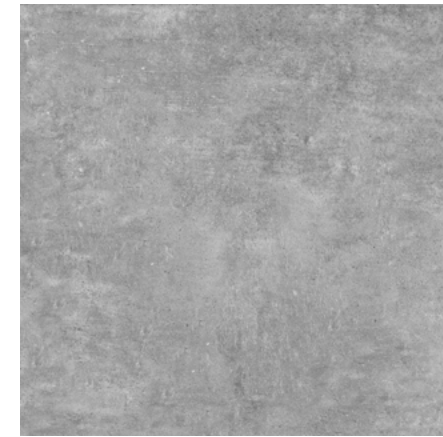
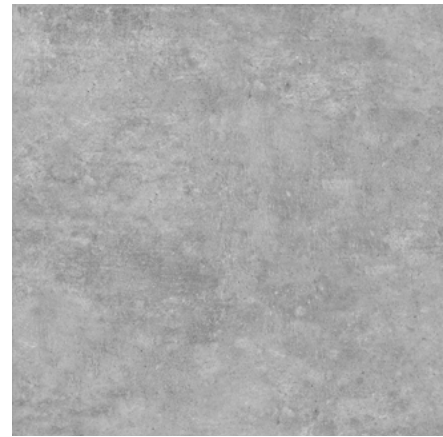
White



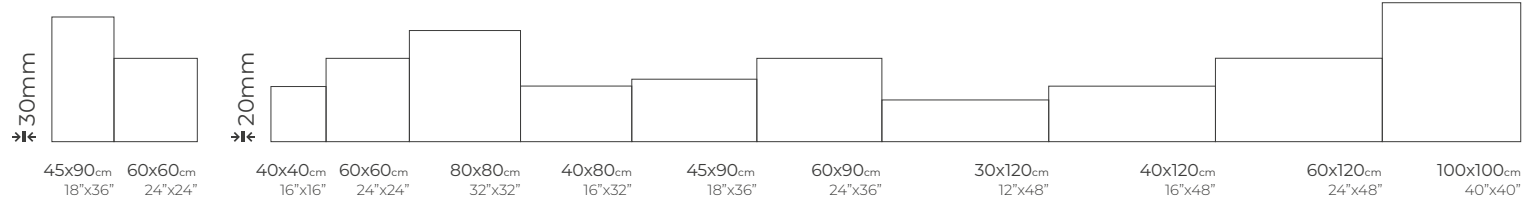
Oak



VIVID



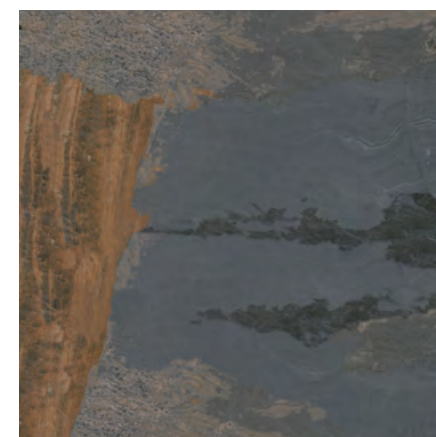
Grey



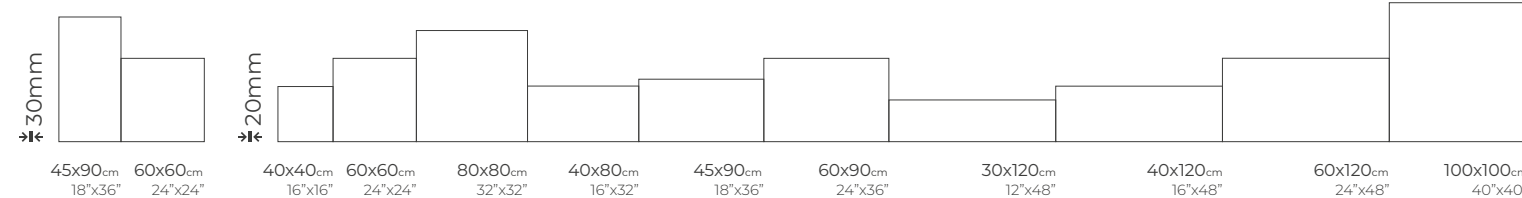
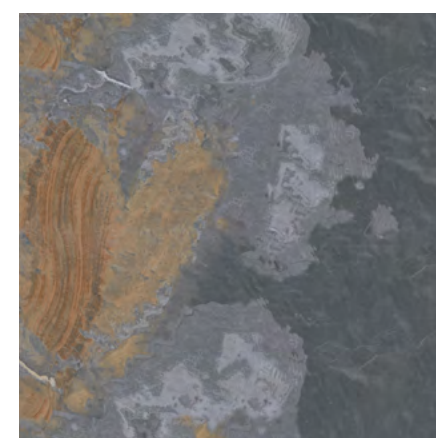
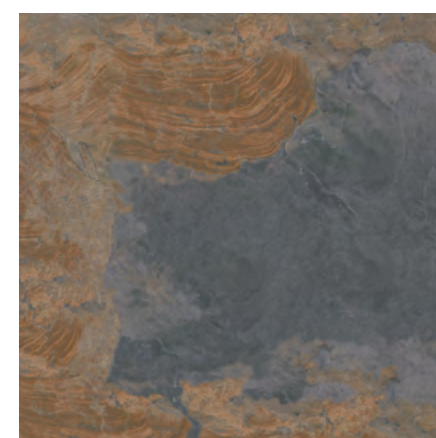


MYSTIQUE
60x60

MYSTIQUE



Multi Color





SAHRA
60x60

SAHRA

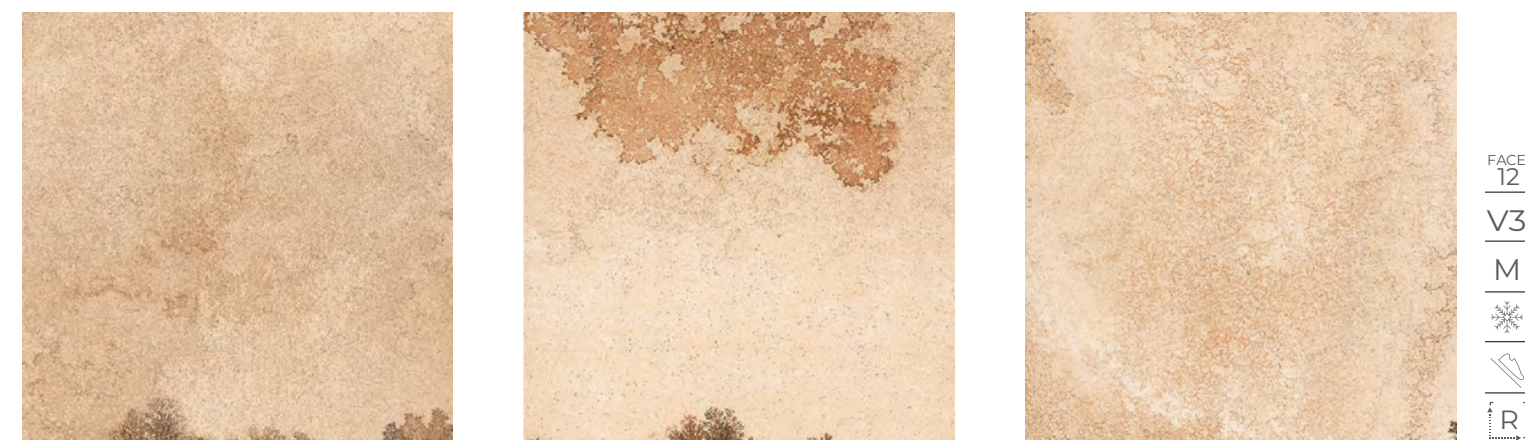


FACE 12
V3
M
☼
✍️
R

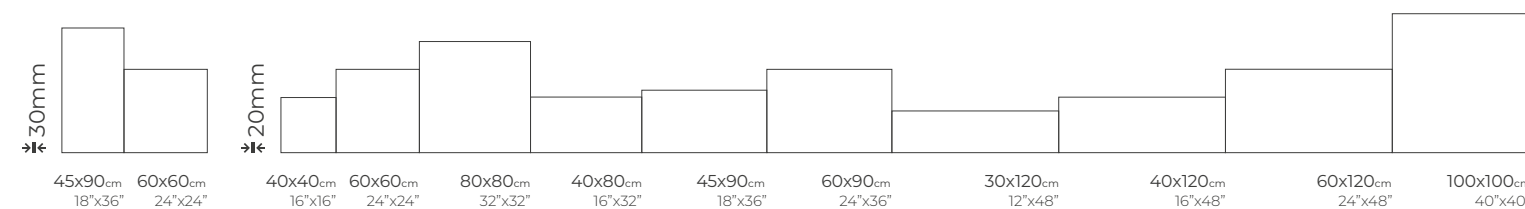
Solnhofen



FACE 12
V3
M
☼
✍️
R



FACE 12
V3
M
☼
✍️
R





VERMONT
60x60 GRAU

PORTO



Grey



Anthracite



Blanco



Taupe



VERMONT



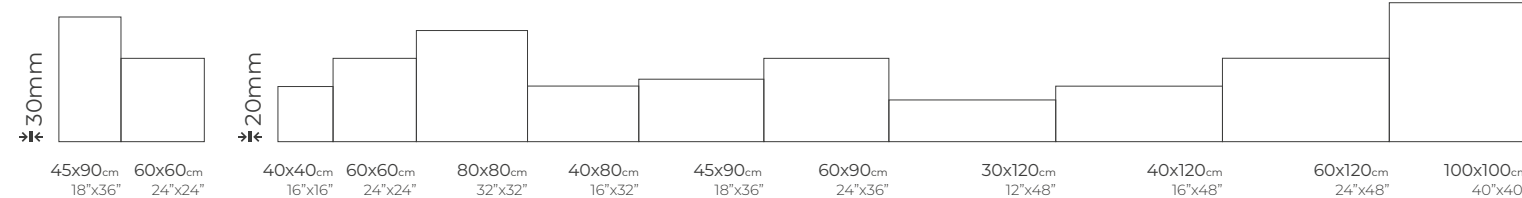
Grau



Brown



Sand





PRAIA
60x60 GREY

PRAIA

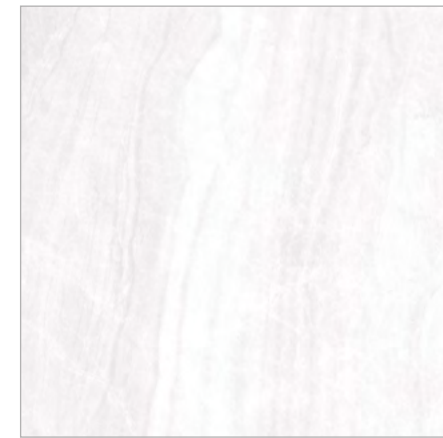


Cream



Carrara

FACE
6
M
❄️
✍️
R



White



Grey

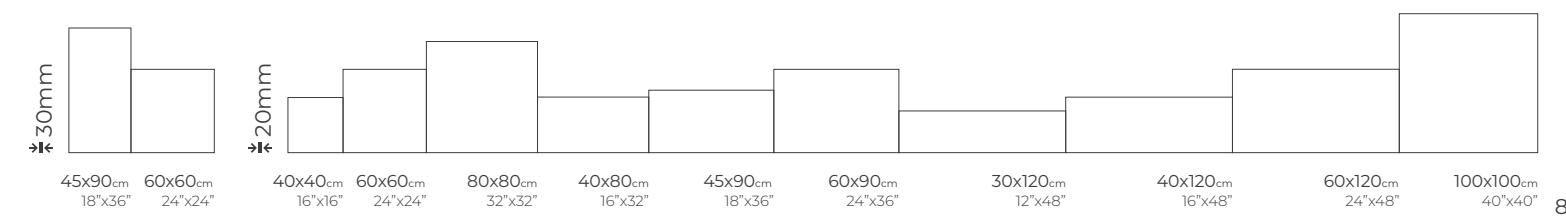
FACE
6
M
❄️
✍️
R

TAPPETO



Mix Decor

M
❄️
✍️
R





TERRACOTTO
60x60

SLATE



Taupe



Jade



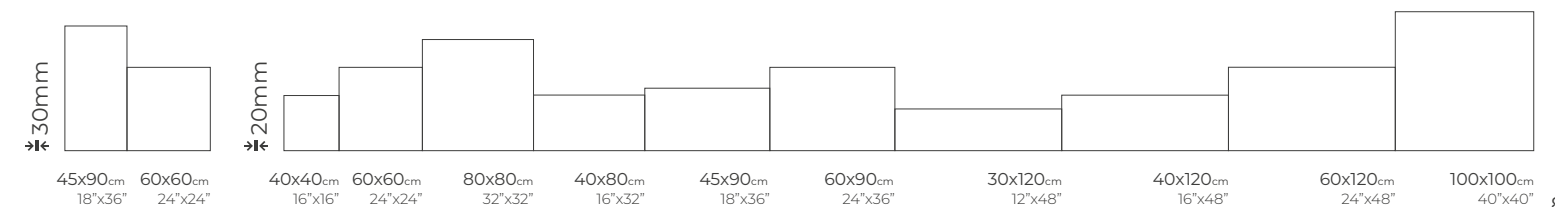
Grey



Bone



TERRACOTTO





TRAVERTEN
60x60 DARK BEIGE

TRAVERTEN



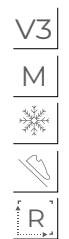
Dark Beige



Beige



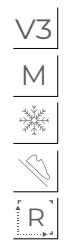
Bone



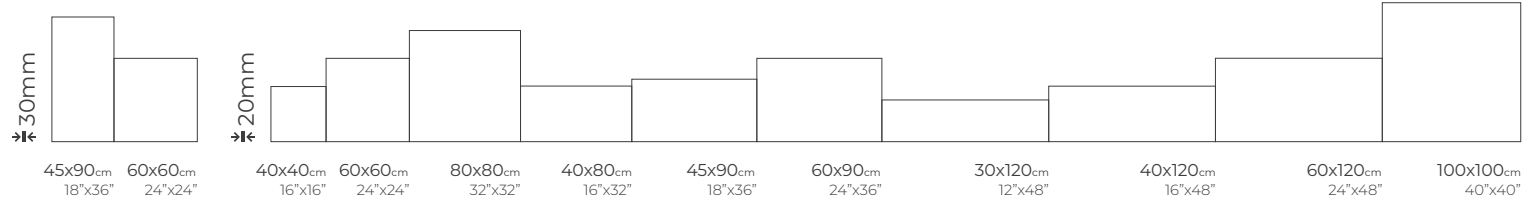
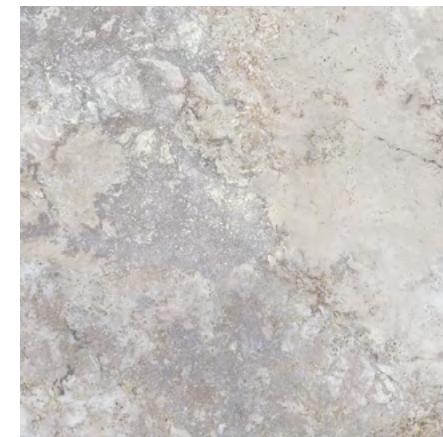
Dark Brown



Light Brown



SILVER TRAVERTEN





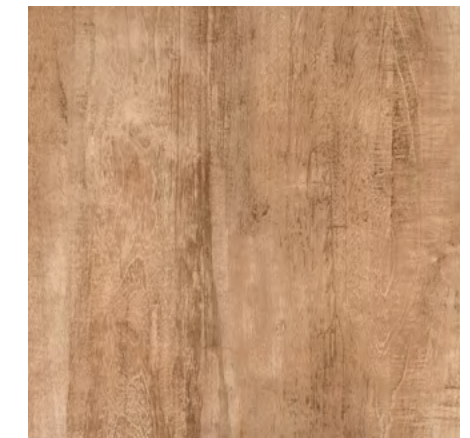
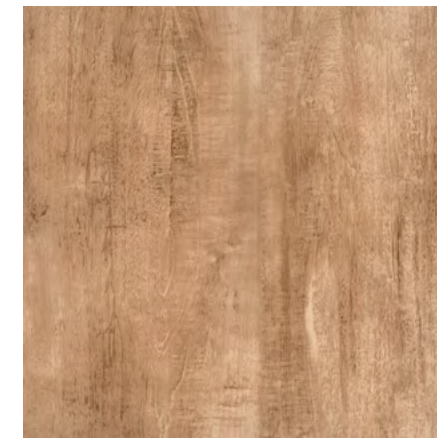
FOREST
60x60 BRAUN

FOREST



- V3
- M
- ❄️
- ✂️
- R

Brown

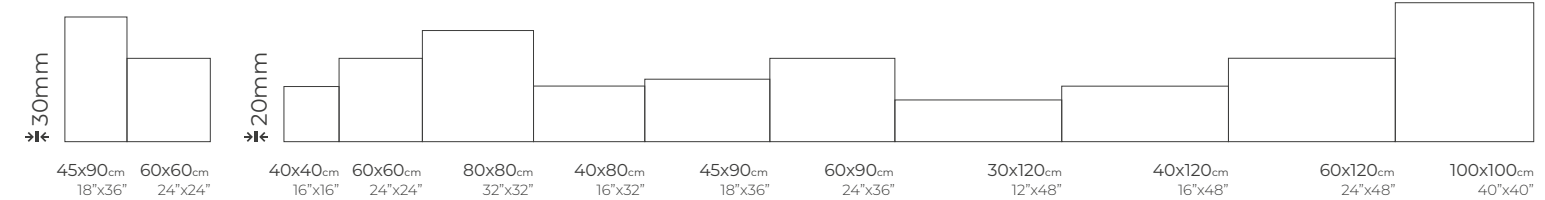


NATURALIA



- V3
- M
- ❄️
- SB
- ✂️
- R

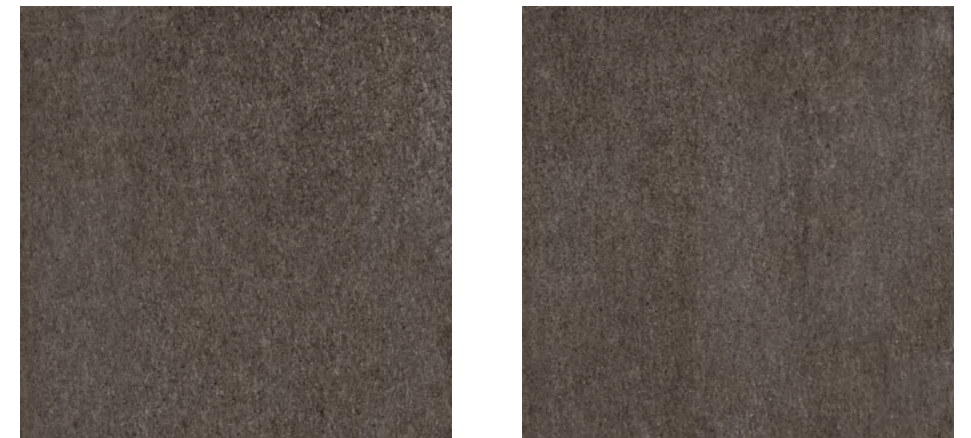
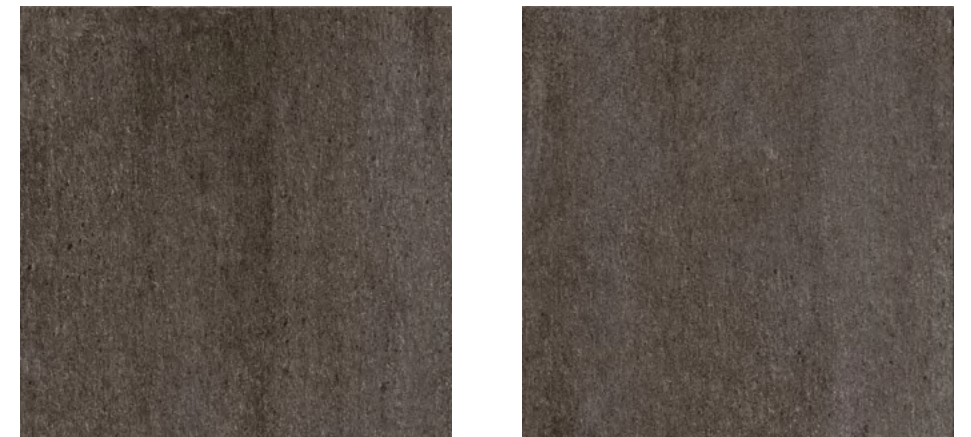
Mielle





MADRUZZO
40x80

MADRUZZO



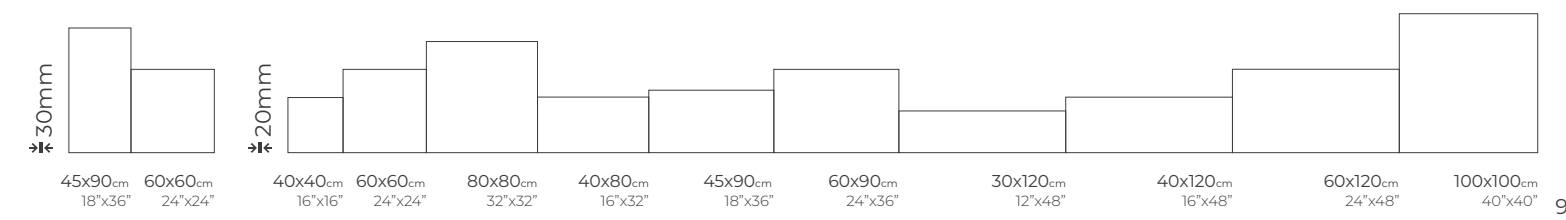
- V3
- M
- ❄️
- SB
- ✍️
- R

RJEKA



- V3
- M
- ❄️
- SB
- ✍️
- R

Beige





EXTREME
60x60, NATURA WHITE

EXTREME

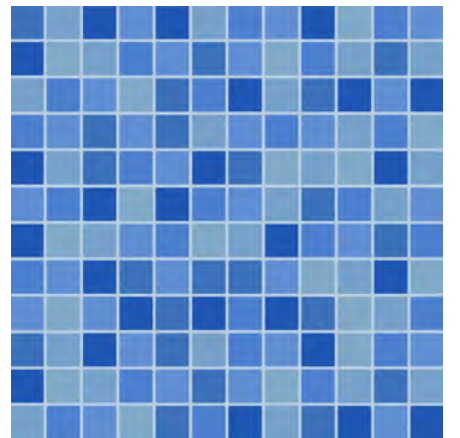


White



Natura White

- V3
- M
- ❄️
- ✍️
- R



Pool Blue

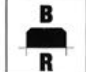
- V3
- M
- ❄️
- ✍️
- R


Havuz Kenarı


Pool Side



20 mm  Kalınlık
Thickness

 Rektefiyeli ve Eğimli
Rectified and Bevel

 Donu Dayanım
Frost Resistance

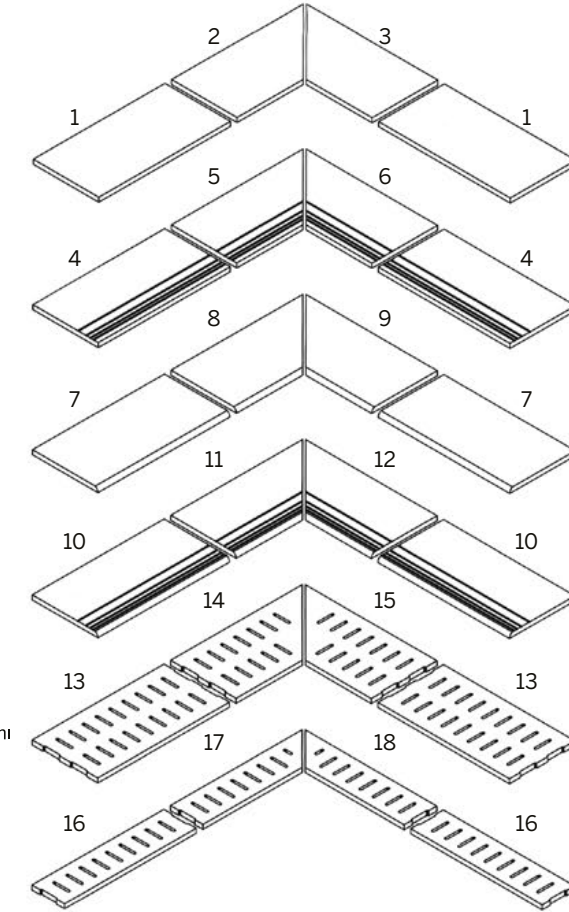
 Kırılma Dayanımı
Breaking Strength

 Leke Dayanımı
Stain Resistant

Class A
R-11  Kaymazlık
Anti-slip

 Homojen Olmayan Renk Dağılımı
Intentionally non-homogeneous colour

 UV Dayanımı
Colour Resistance to Light



Rektefiyeli Yürüme Kenarı
Rectified Step Edge
Sol Köşe Dönüş Ucu
Rectified Left Mitred Corner
Sağ Köşe Dönüş Ucu
Rectified Right Mitred Corner
Kanallı Tutamak
Grooved Step Edge
Kanallı Sola Dönüş Ucu
Grooved Left Mitred Corner
Kanallı Sağa Dönüş Ucu
Grooved Right Mitred Corner
Yuvarlatılmış Kenar
Rounded Edge
Sağa Dönüşlü Yuvarlatılmış Kenar
Right Mitred Rounded Edge
Sola Dönüşlü Yuvarlatılmış Kenar
Left Mitred Rounded Edge
Kanallı Merdiven Basamak
Grooved Stair Tread
Sola Dönüşlü Kanallı Merdiven Basamak
Left Mitred Grooved Stair Tread
Sağa Dönüşlü Kanallı Merdiven Basamak
Right Mitred Grooved Stair Tread
Izgara
Grating
Sola Dönüşlü Izgara
Left Mitred Grating
Sağa Dönüşlü Izgara
Right Mitred Grating
Izgara
Grating
Sola Dönüşlü Izgara
Left Mitred Grating
Sağa Dönüşlü Izgara
Right Mitred Grating

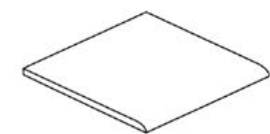
Insert
8x8 cm (3,2" x 3,2")

Listel
8x45 cm (3,2" x 18")
8x60 cm (3,2" x 24")

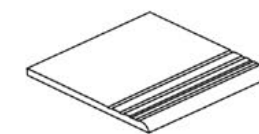
Straight Skirting
8x45 cm (3,2" x 18")
8x60 cm (3,2" x 24")

Skirting Bullnose
8x45 cm (3,2" x 18")
8x60 cm (3,2" x 24")

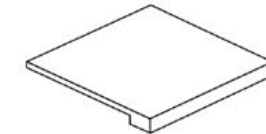
Grating
60x60 cm (24" x 24")



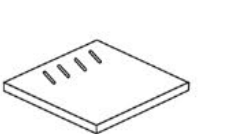
Yuvarlatılmış Kenar Parça
Rounded Edge Piece
45x45 cm (18" x 18")
60x60 cm (24" x 24")



Kanallı Merdiven Basamağı
Grooved Stair Tread
45x45 cm (18" x 18")
60x60 cm (24" x 24")



Düz Merdiven Basamağı
Grooved Elit Stair / Plain Elit Stair
45x45 cm (18" x 18")
60x60 cm (24" x 24")



Grating
45x45 cm (18" x 18")



SIDE WALK
60x60

SIDE WALK



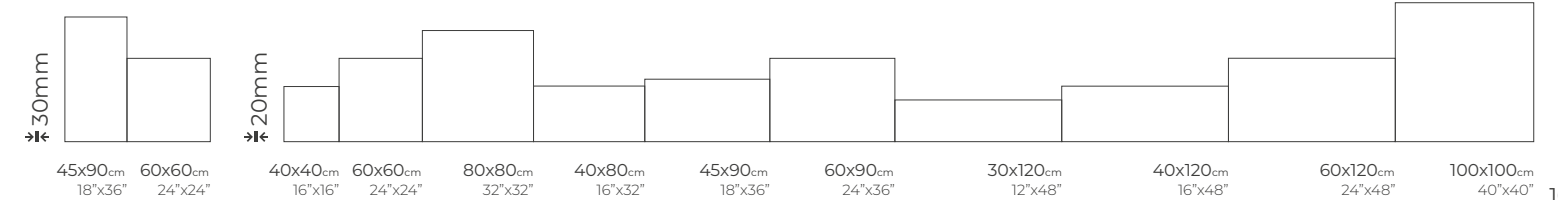
Line



Point

M

FB



Teknik Özellikler

Technical Characteristics

TEST		STANDART	TSE EN14411	TEST DEĞERLERİ TEST VALUE
Ölçüler Dimensions	En-Boy / Length - Width	TSE EN ISO 10545-2	± 0,6 % ± 2,0 mm	± 0,15 %
	Kalınlık / Thickness	TSE EN ISO 10545-2	± 5 % ± 0,5 mm	± 0,5 %
	Kenar Düzgünlüğü / Straightness of Sides	TSE EN ISO 10545-2	± 0,5 % ± 1,5 mm	± 0,3 %
	Gönyeden Sapma / Rectebqularit	TSE EN ISO 10545-2	± 0,5 % ± 2,0 mm	± 0,3 %
	Merkez Eğriliği / Center Curvature	TSE EN ISO 10545-2	± 0,5 % ± 2,0 mm	± 0,15 %
	Kenar Eğriliği / Edge Curvature	TSE EN ISO 10545-2	± 0,5 % ± 2,0 mm	± 0,1 %
	Düzlemeden Sapma / Warpage	TSE EN ISO 10545-2	± 0,5 % ± 2,0 mm	± 0,15 %
Su Emme / Water Absorption		TSE EN ISO 10545-3	≤ 0,5 %	≤ 0,5 %
Eğime Dayanımı / Bending Strength		TSE EN ISO 10545-4	R > 32 N / mm ²	55 N / mm ²
Kırılma Direnci / Modulus of Rupture		TSE EN ISO 10545-4	> 1300 N	3000 N
Kayma Direnci Slip Resistance	Mat	DIN 51130, 51097	Üretici tarafından belirlenir Should be declared by the manufacturer	≤ R9
	Bushhammered	DIN 51130, 51097	Üretici tarafından belirlenir Should be declared by the manufacturer	R11
	Mat & b/h	ASTM C 1028	> 0,60 Kuru & Islak Dry & Wet	0,60 Kuru & Islak Dry & Wet
Derin Aşınma Direnci / Deep Scratch Resistance		TSE EN ISO 10545-6	> 175 mm ³	130 mm ³
Aşınma Direnci / Resistance to Abrasion		TSE EN ISO 10545-7	Üretici tarafından belirlenir Should be declared by the manufacturer	PEI 5
Termal Genleşme / Thermal Expansion		TSE EN ISO 10545-8	Üretici tarafından belirlenir Should be declared by the manufacturer	Max. 6x10 ⁻⁸
Yüzey Sertliği / Stracth Hardness		DIN 18155	Üretici tarafından belirlenir Should be declared by the manufacturer	MOHS 7
Termal Şok Direnci / Thermal Shock Resistance		TSE EN ISO 10545-9	Gereklidir / Required	Dayanıklıldır / Resistant
Çatlama Mukavemeti / Cracking Resistance		TSE EN ISO 10545-11	Gereklidir / Required	Dayanıklıldır / Resistant
Dona Dayanım / Frost Resistance		TSE EN ISO 10545-12	Gereklidir / Required	Dayanıklıldır / Resistant
Kimyasal Dayanım / Chemical Resistance		TSE EN ISO 10545-13	Üretici tarafından belirlenir Should be declared by the manufacturer	Class A
Leke Dayanım / Stain Resistance		TSE EN ISO 10545-14	Üretici tarafından belirlenir Should be declared by the manufacturer	Dayanıklıldır / Resistant = 5
UV Dayanım Renk Solması / Colour Resistance to UV		DIN 51094	Üretici tarafından belirlenir Should be declared by the manufacturer	Değişim gözlenmedi No change observed

Semboller

Symbols



Dona Dayanım
Frost Resistance

Rektifiye
Rectified

Mat
Matt

Kaymazlık
Anti-slip

Sırlı Yüzey
Glazed Body

Tuz Biber
Salt and Pepper

Full Body

V Değeri
V Value

Paketleme Bilgileri

Packaging Details

Ebat / Size (cm)	Kalınlık / Thickness (mm)	Palet Ebadı / Palette Size (cm)	Kutudaki Adet / Pieces in Box	Kutu Ağırlığı / Box weight (kg)	Kutu / Box (m ²)	Palet / Palette (m ²)	Palet Kutu Adet / Pallet box pieces	Palet Ağırlığı / Pallet Weight (kg)
60x120 Rektifiyeli Rectified	20	71x131	1	30,6	0,72	15,12	21	680

Ebat / Size (cm)	Kalınlık / Thickness (mm)	Palet Ebadı / Palette Size (cm)	Kutudaki Adet / Pieces in Box	Kutu Ağırlığı / Box weight (kg)	Kutu / Box (m ²)	Palet / Palette (m ²)	Palet Kutu Adet / Pallet box pieces	Palet Ağırlığı / Pallet Weight (kg)
80x80 Rektifiyeli Rectified	20	80x120	1	27,2	0,64	28,80	45	1,240

Ebat / Size (cm)	Kalınlık / Thickness (mm)	Palet Ebadı / Palette Size (cm)	Kutudaki Adet / Pieces in Box	Kutu Ağırlığı / Box weight (kg)	Kutu / Box (m ²)	Palet / Palette (m ²)	Palet Kutu Adet / Pallet box pieces	Palet Ağırlığı / Pallet Weight (kg)
40x80 Rektifiyeli Rectified	20	80x120	2	27,2	0,64	15,36	24	680

Ebat / Size (cm)	Kalınlık / Thickness (mm)	Palet Ebadı / Palette Size (cm)	Kutudaki Adet / Pieces in Box	Kutu Ağırlığı / Box weight (kg)	Kutu / Box (m ²)	Palet / Palette (m ²)	Palet Kutu Adet / Pallet box pieces	Palet Ağırlığı / Pallet Weight (kg)
60x60 Rektifiyeli Rectified	20	80x120	2	32,7	0,72	21,60	30	1,005
60x60 Rektifiyesiz Non Rectified	20	80x120	2	33,1	0,72	21,60	30	1,020

Ebat / Size (cm)	Kalınlık / Thickness (mm)	Palet Ebadı / Palette Size (cm)	Kutudaki Adet / Pieces in Box	Kutu Ağırlığı / Box weight (kg)	Kutu / Box (m ²)	Palet / Palette (m ²)	Palet Kutu Adet / Pallet box pieces	Palet Ağırlığı / Pallet Weight (kg)
40x60 Rektifiyeli Rectified	20	80x120	2	20,5	0,48	32,64	68	1,430

Ebat / Size (cm)	Kalınlık / Thickness (mm)	Palet Ebadı / Palette Size (cm)	Kutudaki Adet / Pieces in Box	Kutu Ağırlığı / Box weight (kg)	Kutu / Box (m ²)	Palet / Palette (m ²)	Palet Kutu Adet / Pallet box pieces	Palet Ağırlığı / Pallet Weight (kg)
40x80 Rektifiyeli Rectified	20	80x120	4	28,5	0,64	32,00	50	1,445
40x80 Rektifiyesiz Non Rectified	20	80x120	4	29,8	0,64	32,00	50	1,505

Ebat / Size (cm)	Kalınlık / Thickness (mm)	Palet Ebadı / Palette Size (cm)	Kutudaki Adet / Pieces in Box	Kutu Ağırlığı / Box weight (kg)	Kutu / Box (m ²)	Palet / Palette (m ²)	Palet Kutu Adet / Pallet box pieces	Palet Ağırlığı / Pallet Weight (kg)
20x120	20	75x125	2	21,5	0,48	23,04	48	1,062
30x120	20	75x125	2	32	0,72	23,04	32	1,054
40x120	20	90x125	2	43	0,96	19,20	20	890
100x100	20	110x115	1	46	1	24,00	24	1,139

Ebat / Size (cm)	Adet / Kutu / Pieces / Box	Kutu / Box (m ²)	Kutu Ağırlığı / Box weight (kg)	Palet Kutu Adet / Pallet box pieces	Palet / Palette (m ²)	Palet Ağırlığı / Pallet Weight (kg)
30mm 45x90cm 18"x36"	60x90x2 24"x24"	0,54	26	48	25,92	1,200
40mm 45x90cm 18"x36"	60x90x2 24"x24"	0,54	26	44	23,76	1,100
40x40cm 16"x16"	60x60cm 24"x24"	0,54	26	48	25,92	1,200
80x80cm 32"x32"	40x80cm 16"x32"	0,54	26	44	23,76	1,100
45x90cm 18"x36"	60x90cm 24"x36"	0,54	26	48	25,92	1,200
30x120cm 12"x48"	40x120cm 16"x48"	0,54	26	44	23,76	1,100
60x120cm 24"x48"	100x100cm 40"x40"	0,54	26	44	23,76	1,100

Genel Müdürlük

Head Office

Akgün Plaza Küçükyalı Aydınevler Mah. Sanayi Cad. No:26 Maltepe / İstanbul

T: +90 (216) 574 88 40 F: +90 (216) 574 88 46

Bölge Müdürlüklerimiz

Regional Directorates

Marmara Bölge Müdürlüğü / İstanbul

Akgün Plaza Küçükyalı Aydınevler Mah. Sanayi Cad. No:26 Maltepe

T: +90 (216) 574 88 40 F: +90 (216) 574 88 46

İrtibat: +90 (533) 201 16 73 / +90 (555) 974 49 01

Güneydoğu Anadolu Bölge Müdürlüğü / Adana

100. Yıl Mah. Dr. Sadık Ahmet Bul. Palmiye Sitesi A-Blok Çukurova

T: +90 (553) 256 41 32 F: +90 (322) 256 41 33

İrtibat: +90 (533) 239 48 12 / +90 (533) 608 10 90

İç Anadolu Bölge Müdürlüğü / Ankara

Yıldız Mah. 4. Cadde 21/A Çankaya

T: +90 (312) 439 32 11 F: +90 (312) 439 32 50

İrtibat: +90 (533) 282 15 85 / +90 (553) 239 40 50

Doğu Anadolu Bölge Müdürlüğü / Diyarbakır

İrtibat: +90 (533) 205 93 11 / +90 553 239 40 51

Batı Karadeniz Bölge Müdürlüğü / Samsun

İrtibat: +90 (533) 594 45 22

Doğu Karadeniz Bölge Müdürlüğü / Trabzon

İrtibat: +90 (530) 660 41 13

Ege Bölge Müdürlüğü / İzmir

İrtibat: +90 (533) 201 16 72

Akdeniz Bölge Müdürlüğü / Antalya

İrtibat: +90 (0533) 282 37 01

Fabrikalarımız

Factories

Akgün Seramik San.ve Tic.A.Ş.

Franlar Köyü Mevkii Pazaryeri / Bilecik

T: +90 (228) 381 41 41 F: +90 (228) 381 41 48

Veli Akgün İnşaat Seramik San.ve Tic.Ltd.Şti.

Gediz Organize Sanayi Bölgesi 101. Cadde No.2 Gediz / Kütahya

T: +90 (274) 457 50 03 F: +90 (274) 457 52 33

Veli Akgün İnşaat Seramik San.ve Tic.Ltd.Şti.

Bozüyük Kütahya Karayolu 22.Km Kümbet Mevkii İnönü / Eskişehir

T: +90 (222) 595 70 01 F: +90 (222) 595 71 38

Akgün Toprak San.İnşaat.ve Tic.A.Ş.

Oluklu Köyü Söğüt / Bilecik

T: +90 (228) 368 00 20 F: +90 (228) 368 00 25

Veli Akgün İnşaat Seramik San. ve Tic. Ltd. Şti.

Kemalpaşa OSB Mah. 515 Sk. No:3/1 Kemalpaşa / İZMİR

T: +90 (232) 878 35 20

Duratile BG

Tasar Osvobaditel Str.43 Novi Pazar / BULGARIA

T: .+359 537 22 100 F: +359 537 22 120



 **dura-stone[®]**